



AZERBAIJAN
CASPIAN SHIPPING
COMPANY



YARENGA

V E S S E L S P E C I F I C A T I O N S



54t TBR Anchor Handling Towing and Supply Vessel
Deck space 374 m²



Vessel Specifications

Dimensions

Length overall, m	67,3
Length between perpendicular, m	58,2
Breadth overall, m	13,9
Hull Height, m	7,3
Displacement of the vessel unloaded, t	1508
Displacement of vessel fully loaded, t	1923
Maximum draft, m	5,20
Light draft, m	3,31
Deadweight, t	1394
Gross tonnage, t	1585

Capacities

Crew, person	19 (one shift)
Speed, knots	15,5
Fresh Water, m3	256
Ballast / drill water, m3	1047
Liquid mud / base oil, m3	130
Glycol, m3	101
Deck cargo capacity, t	500
Deck strength, ton/ m2	5
Clear deck area, m2	374
Clear deck area (max L x B)	34x11
Greasing oil capacity, m3	14,83
Fuel capacity, m3	812
Cement, Barite tank, m3	170
Endurance	30

General Data

IMO number	8119053
Port of registry / Call sign	Baku / 4JJU
Purpose Of The Ship	AHTS (Anchor Handling Towing and Supply) Vessel
Type of the Ship	The ship is all-welded, with a continuous deck, raised fore dock and superstructure in the bow section of the ship.
Flag	Azerbaijan
Year built / builder	1984, Shipyard - "Laivatellisuus" Joint Stock Company. Turku, Finland
Class	KM(*) L2[1] AUT2 tug / supply ship

Machinery and Propulsion

Main engines	2 x 12V22 type "Wartsila Vaasa" diesel engines with a capacity of 2 x 1780 kW (2 x 2420 BHP) at 1000 rpm.
Main propellers	2 x stainless steel, four-bladed adjustable pitch screws 3m in diameter, on stationary nozzles.
Bow thruster	With 400 kW electric motor drive
Diesel engines	2 x 6R 22 type "Wartsila Waasa" with a capacity of 2 x 885 kW (2 x 1200 BHP) at 1000 rpm
Generators	With a capacity of 2x550 kW at 1000 rpm.
Emergency generator	1 x 195kVt (Deutz 6M1015M)

Special Equipment

Bollard Pull, KN (t)	860 (86)
Anchor Handling Winch Pull capacity, t	95
Anchor Handling Drum capacity	L=180 m; D=65mm
Towing Winch Pull capacity, t	90
Towing Drum capacity	L=1000 m; D=60mm
Shark Jaw	2x25t
Towing Pin	2x25t

Stern Roller	250t
Deck Crane	The smokestack on the starboard side of the ship has been equipped with a derrick crane with cargo carrying a capacity of 10 tons and 8m handling radius.
Fastenings for Containers	The upper deck has been provided with fasteners designed for fastening of 20 pcs. of "PSO 20" type standard containers. For power supply of "PSO 20" type standard refrigerating containers, protected special output is installed on the upper deck, on the shell of smokestack on both (starboard and port) side of the ship. The ship is supplied with two refrigerated containers.
Anchor and Chains	2 x HOLLA type rolling mill anchors, each weighting 1750 kg. Anchor chains with dimensions of 2 x 750 m, 3rd category, with a caliber equal to 32 mm. A hydraulic power drive windlass has been installed on the bow deck.

Bunkering and Discharge Flow Rate

Fuel: The system of diesel cargo is supplied by two cargo discharge pumps with a capacity of 100 m³/hour, at pressure of 6 bars.

Fresh water: The system of fresh water is supplied by one freshwater cargo discharge pump with a capacity of 50 m³/ h, at pressure of 6 bar.

Ballast water: Water discharge pump with a capacity of 160 m³/ hour at pressure of 1,5 bar

Liquid Mud: Water discharge pump with a capacity of 100 m³/ hour at pressure of 7 bar

Bulk Cargo: The ship is equipped with high pressure tanks, designed for transportation of bulk cargo, each with a volume of 42,5 m³. In order to provide unloading of cargo, the ship has been equipped with 2 air compressors with a capacity of 14,5m³/min at pressure of 5 bar

Safety Equipment

Life rafts	4pcs x 20 person
Fast rescue boat	1 pcs
Life boat davit	1 pcs
Life buoy	8 pcs
Life jacket	27 pcs
Immersion suit	26 pcs
Embarkation ladder	2 pcs

Accommodation

Max per LSA	23 person
1 berth cabin	8
2 berth cabins	7
4 berth cabins	2
Sick bay / hospital	1

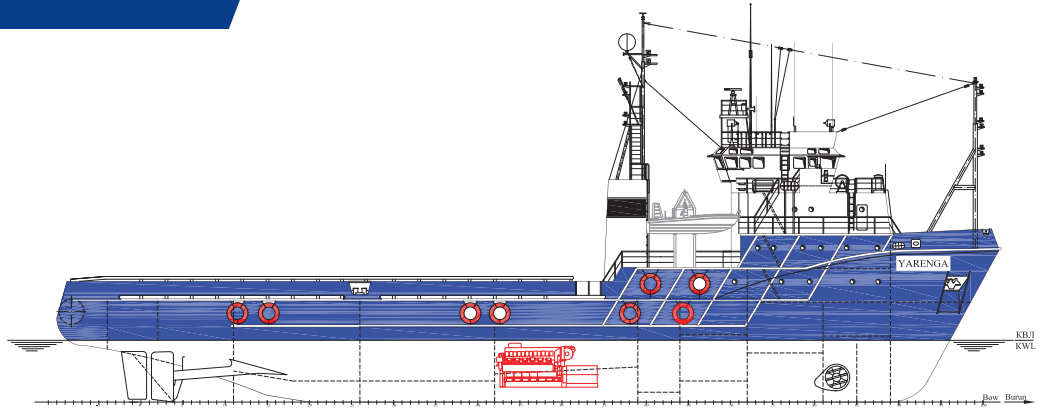
Navigation Equipment

FS-2575T, FM-8900, TRF-3024, ICOM IC-M 25, UAIS MT-1, Racal Decca, MDC-2910, TRON 40S MKII, Felcom-18, SSAS Felcom-18, McMurdo RT9, McMurdo R1



YARENGA

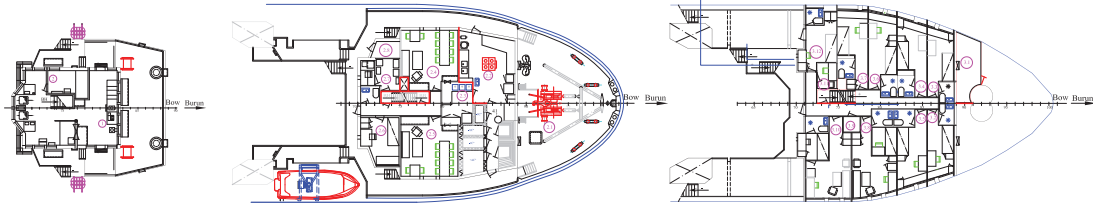
VESSEL SPECIFICATIONS
54t TBR Anchor Handling Towing and Supply Vessel
Deck space 374 m²



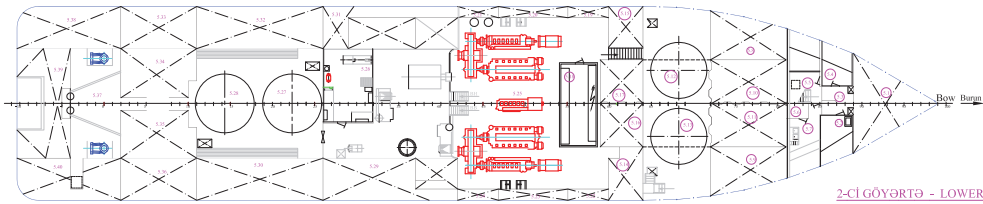
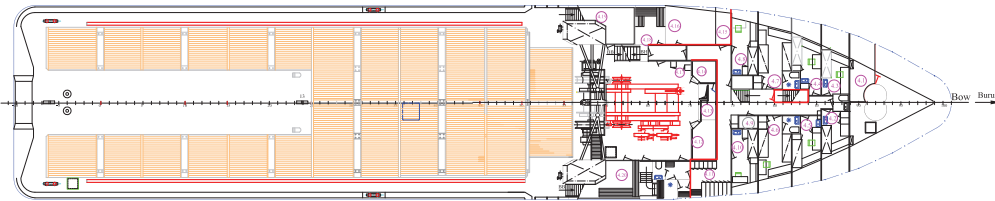
KAPİTAN GÖYÖRTÜSÜ - BRIDGE DECK

1-ci BAK GÖYÖRTÜSÜ - 1-FORCASLE DECK

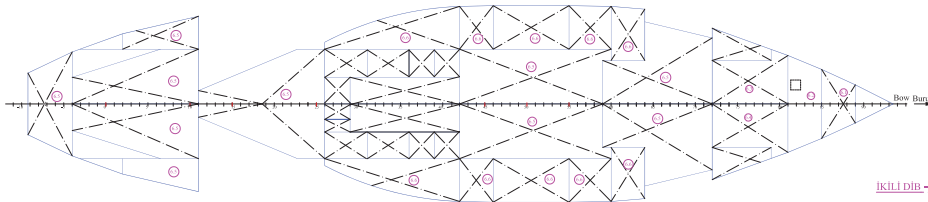
2-ci BAK GÖYÖRTÜSÜ - 2-FORCASLE DECK



BAS GÖYÖRTÜ - MAIN DECK



2-Cİ GÖYÖRTÜ - LOWER DECK



İKİLİ DİB - TANK TOP



YARENGA

VESSEL SPECIFICATIONS
54t TBR Anchor Handling Towing and Supply Vessel
Deck space 374 m²



Address: 2, Neftchilar Avenue, AZ 1003, Baku, Azerbaijan Republic

Phone: (+99412) 404 37 00 | **Fax:** (+99412) 404 38 00

Email: projects@asco.az | **Web:** www.asco.az

Direct Contacts:

Phone: (+99412) 404 37 15; (+99412) 404 37 40