



AZERBAIJAN
CASPIAN SHIPPING
COMPANY



GURBAN ABASOV

V E S S E L S P E C I F I C A T I O N S





600t Crane Vessel / Deck space 3235, m² / Deck strength 5t/m²
Flotel Accommodation 187 pax + crew 217 max pob



Vessel Specifications

GENERAL DATA

Type	Crane Vessel / Flotel
Year built / builder	1986, Turku, Finland
Class	(RMRS) KM  L2  AUT2 DYNPOS-3 special purposes crane ship-catamaran
Flag	Azerbaijan
Port of registry	Baku
Call sign	4JCI
IMO number	8410172
MMSI No:	MMSI 423341100

DIMENSIONS

Length overall	141.40 m
Breadth	62.80 m
Moulded Depth	13.00 m
Summer Draft	5.20 m
Freeboard at	3.808 m
Gross Tonnage	21.497 t
Net Tonnage	6449 t
Deadweight	6277 t
Displacement	13993 t
Deck Strength	5 t/m ² (cargo area strength 10 t/m ²) 3770 m ² (without living modules on deck)

NAVIGATION EQUIPMENT

Radars	2 x Furuno
Echo Sounder	1 x Furuno FE700
Gyro Compass	1 x Standart-22
Auto Pilot	1 x NAVIS AP-3000
Doppler Log	1 x Furuno DS80
GPS	2 x Furuno GP-150
ECDIS	1 x Transas

DYNAMIC POSITIONING SYSTEM (DP3 CLASS)

DP System	Kongsberg – K-Pos 21+11, w/cJoy
PRS	2 x DGPS 1 x HIPAP 352P MGC (Kongsberg) - 1 1 x Taut-wire MK16 V1.0 1 x SpotTrack (Laser based) 1 x Radius(Microwave)
Gyrocompass	3 x Sperry Marine Navigat 100
MRU	2 x MRU 2 1 x MRU 5
Wind sensor	3 x Ultrasonic Wind sensor

COMMUNICATION EQUIPMENT

MF Transceiver	1 x Furuno
Satcom	V-Sat
GMDSS	Inmarsat C, Area 1, 2, 3
VHF	2 x Furuno

CAPACITIES

Fuel Oil	851 m ³
Fresh Water	876 m ³

PROPULSION

Main Engines	3 x 1.850 kW 6 R 32 Wartsila Vaasa
Containerized diesel hydraulic power units	4 x 1268 kW Cummins QSK50M1
Azimuth Propellers	2 x 1.700 kW AQUAMASTER
Bow Thruster	2 x 400 kW Kamewa
Retractable	4 x 1100 kW THRUSTMASTER
Azimuthal Thrusters	OD1500N

AUXILIARIES

Diesel generator	3 x 430 kW 380v x 50 Hz Mitsubishi
Emergency Diesel generator	1 x 116 kW 380v x 50 Hz Deutz

SPEED

Maximum / Economical	10.0/8.0 kts
----------------------	--------------

FUEL CONSUMPTION PER DAY

Maximum / Economical	12/8 tons per day
----------------------	-------------------

LIFESAVING APPLIANCES

Life Boats	2 x 65 man
MES	2 x 101 persons Viking
Life- raft	2 x 101 persons Viking 2 x 51 persons Viking
Lifejackets	289
Immersion Suits	289
FRB	15 man

FIFI EQUIPMENT

Fixed system	CO ₂
BA sets	x 6

MOORING EQUIPMENT

Anchor winch	8 x C-Nautical Electric Driven Anchor Wire Mooring Winch 900KN pull on First Layer. Each Winch - 2000 m x 3" Wire
Capstan	RAUMA REPOLACI 120E
Anchors	8 x 12t MK6 Stevpris Anchor
Tugger Wires:	Steel wire rope sling 6x36 IWRC Diameter 52 x 60 m
SWL	34.70 t
Buoy Lassoos:	PDR 4000
Weight	890 kg

CRANE

600 t - KONE

Finland

Blocks

Main 2 x 300 t @ 39 m

Aux 1 x 150 t @ 69 m

Trolley Hoist 1 x 20 t @ 67 m

STABILITY EQUIPMENT

Pumps 2 Ballast pumps

Capacity 250 m³

VESSEL SPECIFIC CHARACTERISTICS

Gurban Abasov is a purpose built 600 T crane vessel with eight point mooring system, and over 3,000 m² of useable deck space available for project works. In 2014 the vessel was modified and upgraded with the addition of purpose built guest accommodation, allowing project works to be carried out whilst passengers remain onboard. Industry leading Mass Evacuation Systems (MES) for full vessel complement are provided. In 2019 the vessel was modified and upgraded for Dynamic Positioning station keeping ability. Present DP Class – DP3.

ACCOMMODATION

Cabins:

Crew cabins:

Single 16

Double 37

Passenger cabins:

VIP (single) 4

Double 68

Hospital 1

Gymnasium 1

Sauna 2

Mess Rooms:

Crew 28

Passengers 68

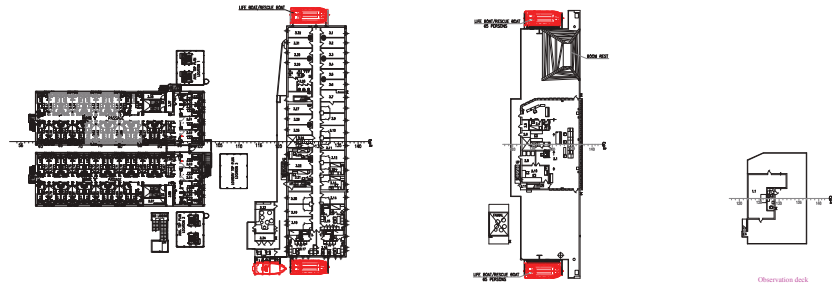
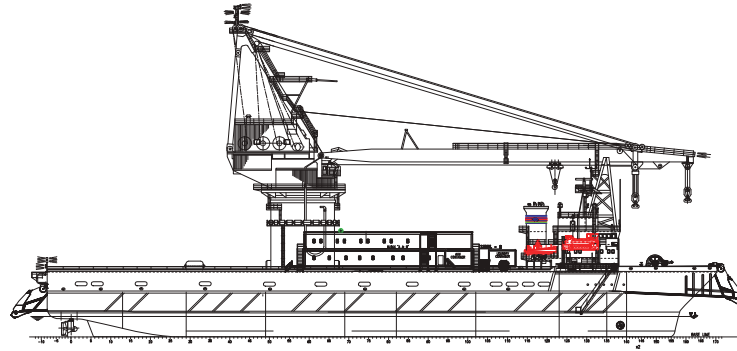
Client Offices 1 for 15 people

Recreation

Rooms 3

Seats (total of all

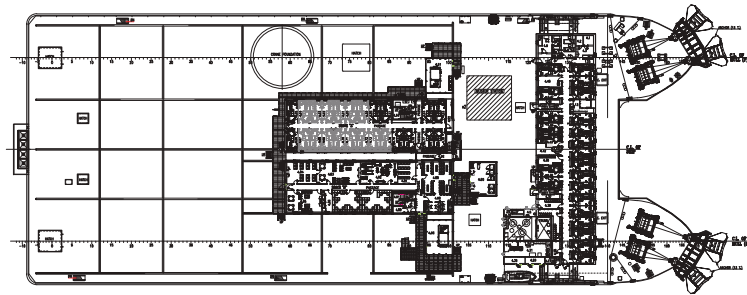
3 recreation rooms) 85



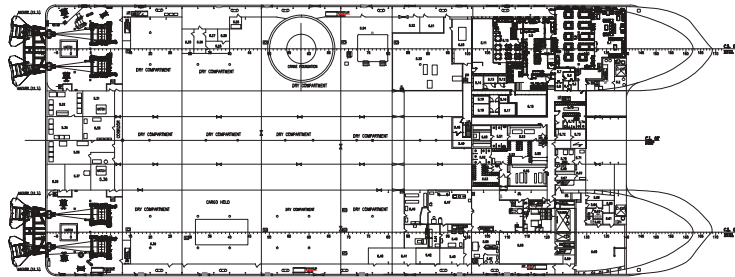
First Bridge deck

Bridge deck

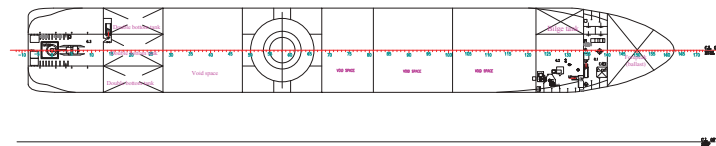
Observation deck



Upper deck



Main deck



Below main deck



Gurban Abasov

VESSEL SPECIFICATIONS

600t Crane Vessel / Deck space 3235 m² / Deck strength 5t/m²

Flotel Accommodation 187 pax + crew 217 max pob



OTHER CRANE VESSELS WITHIN ASCO FLEET



**Azerbaijan type, SWL 2500 MT,
Deck Space 1000 m² – 1 vessel**



Shirvan type, SWL 100 MT, Deck Space 600 m² – 5 vessels



Atlet type, SWL 40 MT, Deck Space 250 m² – 8 vessels



Address: Mikayil Useynov street 2, AZ 1003, Baku, Azerbaijan Republic

Phone: (+99412) 404 37 00 | **Fax:** (+99412) 404 38 00

Email: projects@asco.az | **Web:** www.asco.az

Direct Contacts:

Phone: (+99412) 404 37 15; (+99412) 404 37 40