



AZERBAIJAN  
CASPIAN SHIPPING  
COMPANY



# AURA

V E S S E L   S P E C I F I C A T I O N S



65 TBR Anchor Handling Towing and Supply Vessel / Deck Space 418m<sup>2</sup>



# Vessel Specifications

## Dimensions

Length overall, m	127
Length between perpendiculars, m	59,4
Breadth overall, m	13,8
Hull height, m	6,92
Displacement of the vessel unloaded, t	1484
Displacement of vessel fully loaded, t	2584
Light draft, m	3,16
Estimated draft, m	4,70
Deadweight, t	1178
Net Tonnage, t	447
Gross tonnage, t	1491

## Capacities

Crew, person	18 (one shift)
Speed, knots	16,24
Fresh Water, t, m3	240
Heavy fuels, m3	300
Ballast / drill water, m3	735
Greasing oil capacity, m3	15,3
Fuel capacity, m3	510
Dry Bulk tanks, m3	170
Deck cargo capacity, t	600
Deck strength, ton/ m2	5
Clear deck area, m2	418
Clear deck area (max L x B)	38x11
Endurance	30

## General Data

IMO number	8119132
Port of registry / Call sign	Baku / 4JHW
Purpose Of The Ship	AHTS (Anchor Handling Towing and Supply) Vessel
Flag	Azerbaijan
Year built / builder	1983, Turku shipyard, Finland
Class	KM (*) L2 AUT2 SUPPLY VESSEL

## Machinery and Propulsion

Main engines	2 x 2880 kW (2 x 3915 BHP), 800 rpm "Wartsila Waasa" 9R32 type engines
Propulsion system	With a bow CPP located at the transverse tunnel.
Bow thruster	470 kW, rotation 1800 rpm
Diesel generator	2 x BA 8M 816 LLKU (8CHN 142/160) type drive motor with a capacity of 342 kW, 1500 rpm.
Generator	1FC 5 -356-4TA 40Z type, with a capacity of 350 kW, 400 V, 50 Hz; 1 x with a diesel model
Emergency generator	VOLVO-PENTA, TD-100, ARS/ OG (6N 12,6/140) with a capacity of 127kW at 1500 rpm and 1 F4-314-TA40-2 type generator with a capacity of 100 kW, 380 V, 50 Hz.

## Special Equipment

Bollard Pull, KN (t)	900 (90)
Wire length	L=1000 m; D=60 mm
Towing winch	One anchor winch to handle

Bollard pull and speed with one layer of wire rope on the drum:

anchors with two wire reels and clutch. Two winch heads for D81 mm anchor chain. Removable winch heads are 70, 76 mm and 90 mm in diameter and have been designed for chains.

150t speed 5,0 m / min  
75 t speed 7,5 m / min  
30 t speed 15,0 m / min

Anchor Handling Winch Pull capacity, t 95  
Anchor Handling Drum capacity 90  
Towing Winch Pull capacity, t 90  
Towing Drum capacity L=1000m; D=60mm  
Shark Jaw 2x25t  
Towing Pin 2x25t  
Stern Roller 250t  
Capstan Electric  
Deck Crane One hydraulic swivel crane located on the forecastle deck behind the superstructure. Lifting capacity of the crane - 6 t, handling radius - 7 m. Lifting capacity of the crane - 3 t, handling radius - 12 m.

## Bunkering and Discharge Flow Rate

Fuel	Power driven, local and remote controlled screw pump for pumping of fuel and oil, with a capacity of 100 m3 / hour and with 6 bars pressure.
Fresh Water	Power driven, centrifugal, local and remote controlled fresh water discharge pump with a capacity of 50 m3 / hour and with 6 bars pressure.
Dry Bulk	Freight compressors for cement and dirt, with a capacity of 14.5 m3 / min with a pressure of 4.2 bar.

## Safety Equipment

Life rafts	2 x 20 person
Fast rescue boat	1
FRC davit	2
Life buoy	12
Life jacket	25
Immersion suit	25
Embarkation ladder	2

## Accommodation

Maximum POB as per LSA	20
1 berth cabin	11
2 berth cabins	9
Clinic	1

## Navigation Equipment

MF/HF FS-1562-15-1pcs, VHF FM-8500-2pcs, VHF Kenwood TK-730 H-1pcs, R/buy McMurdo E3a-1pcs, VHF McMurdo R1-3pcs, SART McMurdo S4-2pcs, UAIS FA-100-1, ICOM IC-M23-1, ICOM IC-M25-1pcs, RADAR FR-1510-1pcs, RADAR MDC-1810P-1pcs, INM-C Felcom-12-1pcs, INM. Mini-C TT-3000SSA-1pcs.

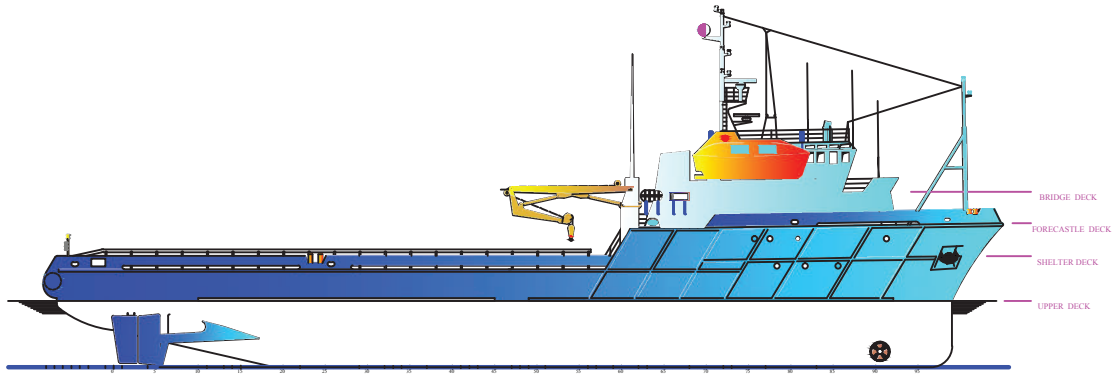


**Aura**

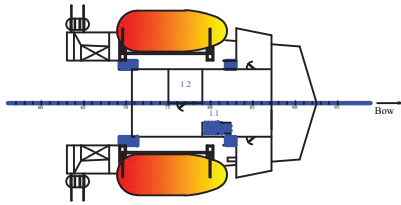
VESSEL SPECIFICATIONS

65 TBR Anchor Handling Towing and Supply Vessel / Deck Space 418m<sup>2</sup>

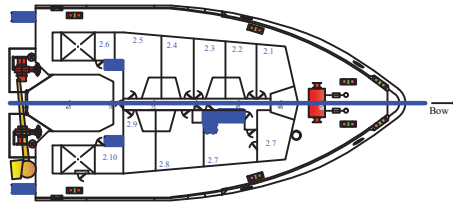
# GA Specifications



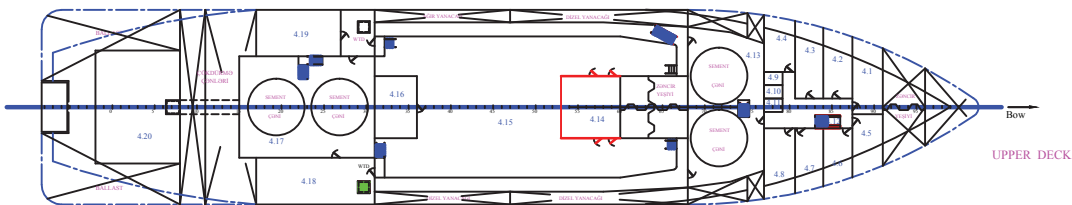
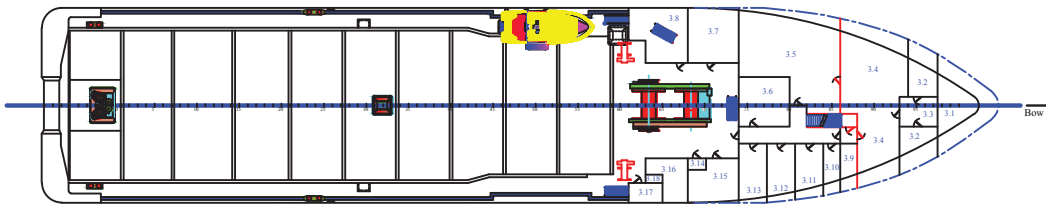
BRIDGE DECK



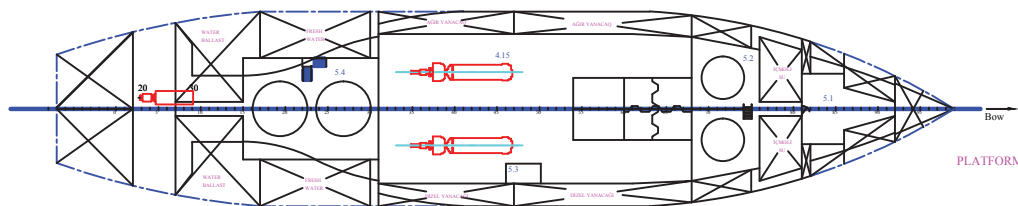
FORECASTLE DECK



SHELTER DECK



UPPER DECK



PLATFORM



**Aura**

VESEL SPECIFICATIONS  
65 TBR Anchor Handling Towing and Supply Vessel / Deck Space 418m<sup>2</sup>





**Address:** 2, Neftchilar Avenue, AZ 1003, Baku, Azerbaijan Republic

**Phone:** (+99412) 404 37 00 | **Fax:** (+99412) 404 38 00

**Email:** [projects@asco.az](mailto:projects@asco.az) | **Web:** [www.asco.az](http://www.asco.az)

**Direct Contacts:**

**Phone:** (+99412) 404 37 15; (+99412) 404 37 40