



AZERBAIJAN
CASPIAN SHIPPING
COMPANY



İSRAFİL HUSEYNOV

V E S S E L S P E C I F I C A T I O N S



219-820 mm pipes up to 550 m depth



Vessel Specifications

Dimensions	
Length overall, m	146.5
Length between perpendicular, m	115.2
Breadth overall, m	33
Hull height up to the main deck, m	13
Displacement of the vessel unloaded, t	13335
Displacement of vessel fully loaded, t	25540
Loaded draft, m (bow / stern)	7
Light draft, m (bow / stern)	3.58
Deadweight, t	12205
Net Tonnage, t	5278
Gross tonnage, t	17556
Stinger length, section #1, m	24.8
Stinger length, section #2, m	26.9
Stinger length, overall, m	51.7

Capacities	
Crew, person	27/274
Fresh Water, t	1000
Ballast / drill water, m³	13500
Fuel capacity, t	1372
Greasing oil capacity, t	10
Cargo carrying capacity, t	7500
Deck strength, ton/ m²	7
Clear deck area, m²	655
Oil consumption, kg / h	0.8
Fuel consumption, kg / h	156.8
Endurance	30

General Data	
IMO number	8705125
Port of registry / Call sign	Baku / 4JIY

Purpose of the Ship: The vessel is designed for laying of pipes 219-1210 mm in diameter on the sea bed at the depth from 10 to 550 m. The possibility of carrying out of repair work of underwater pipelines at depths of up to 60 m. Theoretical average speed of laying pipes 530 mm in diameter at S = 20 mm with manual welding using cellulose electrodes is about 1500 m/day.

Type of the Ship: Seagoing, non-self-propelled steel ship equipped with accommodation superstructure with closed production line for coupling of pipeline by dint of stinger with total length of about 51 m and by other necessary lifting mechanisms for lowering and lifting of pipeline.

Flag	Azerbaijan
Year built / builder	1988 / Rauma – Repola" Joint Stock Company, Mantuluoto Plant, Finland
Class	KE (*) [1] R1

Machinery and Propulsion	
Main engines	5 x G74/6CHRN 36/45 type "Wartsila" engines, with a capacity of 1630 BHP (1198 kW) at 500 rpm. 5 x W8L 20 " Wartsila
Main electric motors	2 x propeller power engines with a power of 2 × 1102.9 kW (2 × 1500 BHP) at 750 rpm through a 700/320 reduction gear.
Diesel generators	2 x harbor diesel generator: "Rutlant - Rumengs" type, KTA 50-G3 model diesel with a capacity of nominal 1403 BHP (1032 kW), 1500 rpm.
Generators	EKO 43/24, 1300 kVa, 1032 kW, 660; 380V, three phase, 1129A, 1290 kVa.
Main engine generator	With capacity of 1675 kW,5x1600kW
Emergency diesel generator	ADQR 200/150 type diesel with a nominal capacity of 200 kW,1x200 kVa 1D12V300

Anchor Handling Gear	
Anchors winches: 10 x anchors: 6 x 17000kg – on the bow and 4 x 17000 kg – on the stern (and the rolling mill anchor with dimensions of 2 x 7350 kg). Anchor deployment is provided via band brakes. Band brakes provide holding of the steel wire with force not less than 80% of the breaking load of the steel wire.	
Anchor wires	64 mm in diameter, L=3000m
Capstan	2 x 241 KN

Special Equipment	
General information: Able to operate in all water depths in the Caspian Sea, and lay pipe from 8 inch through to 48 inch diameter via stinger, the winch A&R is rated to 350 t and can lay pipe and speeds up to 35 meters a minute	
Constituent parts of pipe-laying mechanism	Pipe laying stinger 2 x 175t pipeline tightening devices 8 workshop bays 7 roller shoes for pipes on the main deck Control station for centering

Cargo Handling Equipment	
Main crane: The main crane with carrying capacity of 250 t, equipped with boom, power driven, fully slewing crane is installed on the portside of the ship and designed for shifting of stinger, pipelines etc. The Service crane, installed on the bow of the ship, with a carrying capacity of 30 tons (1 pc.), fully slewing and with power motor, has been designed for maintenance and manipulation of anchor winches, ropes and chains, as well as for lifting in the area of welding.	
250t – KONE Crane Characteristics	Main load line 1x250 40mm – 985mtr Boom LL 1x250 46mm – 1120mtr AUX.LL 1x30 36mm – 308mtr Crane Trolley A 52mm – 132mtr Crane Trolley B 52mm – 206mtr Manrider 26mm1000FT

Deck cranes: With a carrying capacity of 60 tons and 30 tons and these cranes have been designed for carriage of pipes and anchor wires from the warehouse onto the transporter, as well as for lifting of consumable materials.

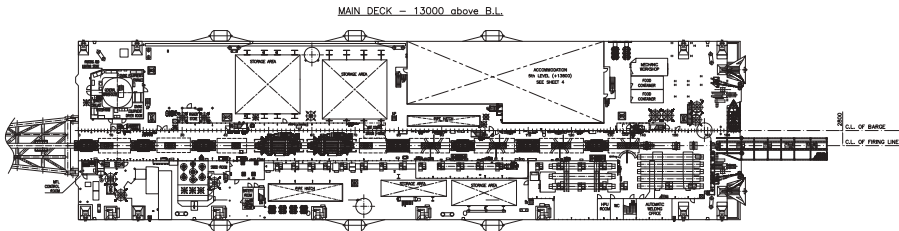
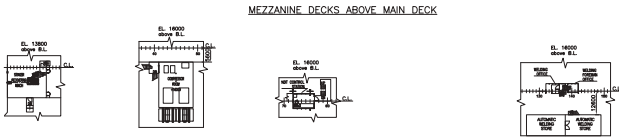
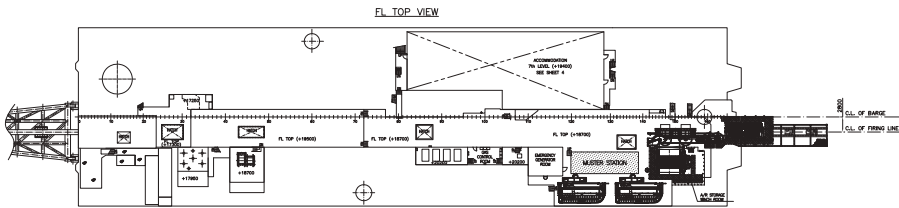
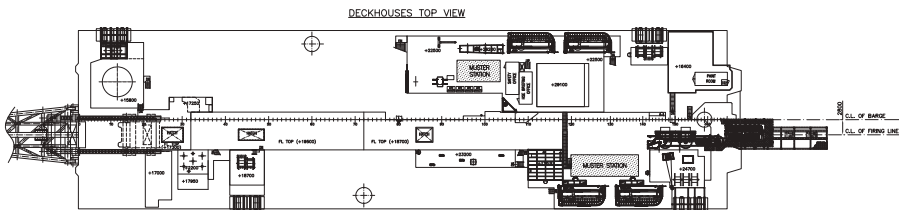
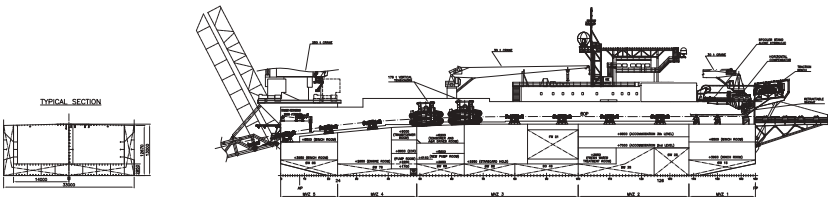
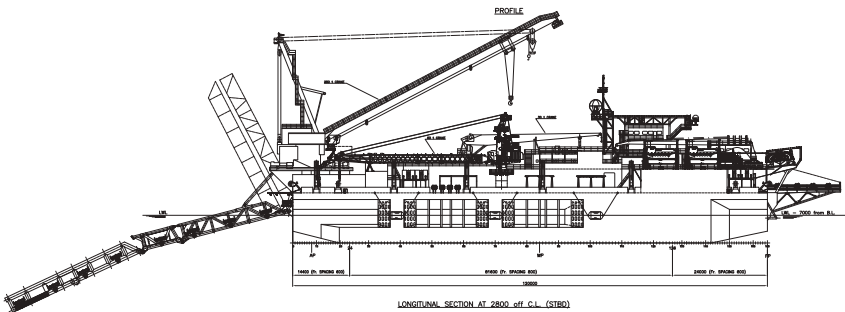
60 t – LIEBHERR Crane Characteristics	Boom LL 60t 42mm – 375mtr Main LL 60t 30mm – 452.5mtr Aux 15t 30mm – 309mtr
30t RAUMA REPOLA Crane (port side) Characteristics	Min LL 30t 30mm – 218mtr Aux LL 12t 30mm – 160mtr
Service crane: Installed on the bow of the ship, with a carrying capacity of 30 tons (1 pc.), fully slewing and with power motor, has been designed for maintenance and manipulation of anchor winches, ropes and chains, as well as for lifting in the area of welding.	
30t RAUMA REPOLA Crane (Bow) Characteristics	Min LL 30t 30mm – 225mtr Aux LL 12t 30mm – 160mtr

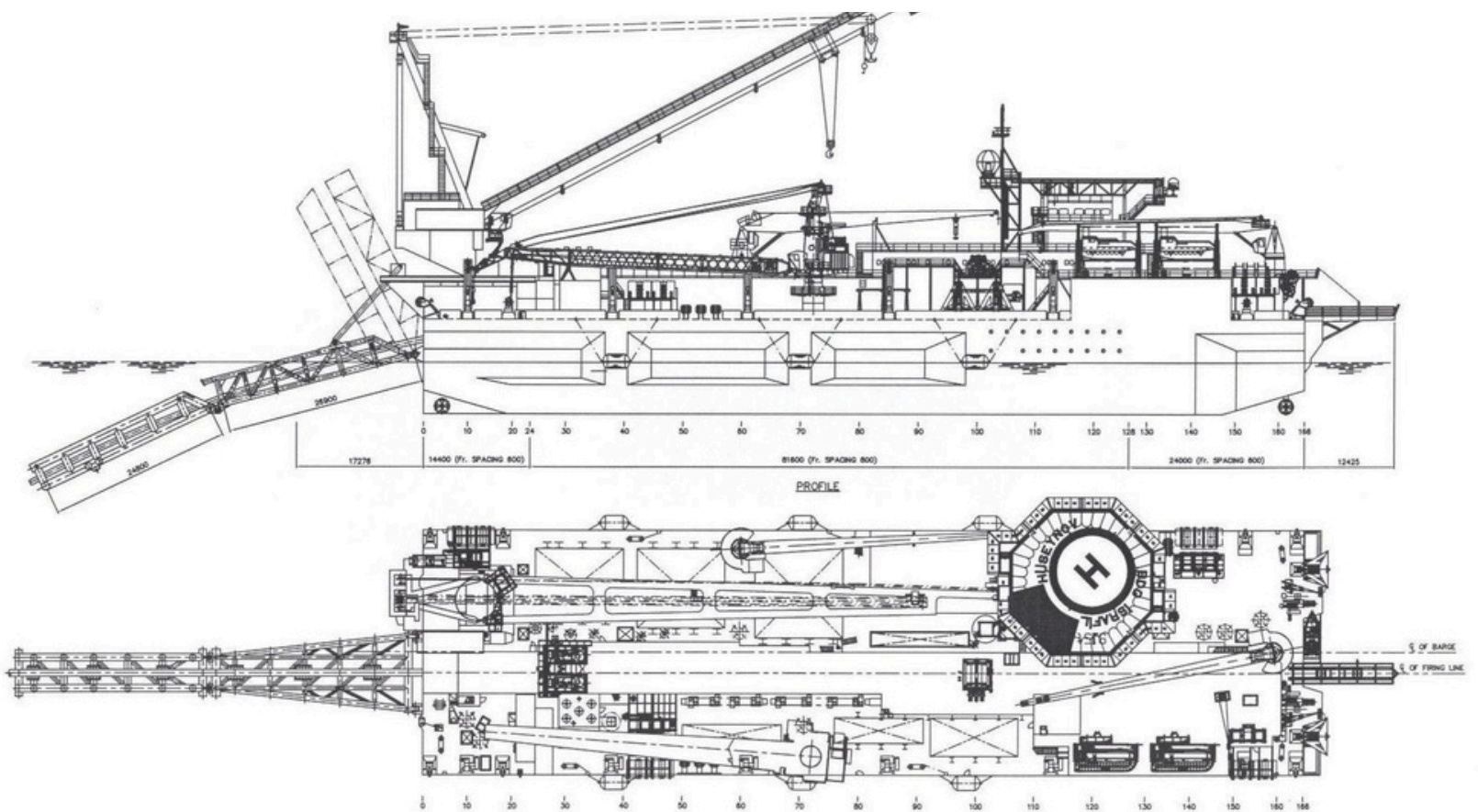
Electric overhead (bridge) crane: 2 x with a carrying capacity of 15 tons, designed for relocation of pipes in the pipe hatch; 5 x electro hydraulic overhead (bridge) crane with a carrying capacity of 40 tons, designed for lifting of pipelines from seabed over the surface of water for the purposes of repairing.

Safety Equipment	
Life rafts	14 x 25,6x35,2x10 person
Life boats	4 x 70 person
FRB	6 person
Life jacket	620
Immersion suit	315
Embarkation ladder	8

Accommodation	
Crew cabins, person	For 27 person
Passenger cabins	For 274 person
Hospital	1
Gymnasium	1
Sauna	0
Mess Rooms, person	1
Client Offices	2
Cinema rooms	1

Navigation & Communication Equipment	
Radars – 1 x FURUNO RCU-014 MU-190; Echo Sounder – 1 x JMC F3000m; Gyro Compass – 1 x ANSCHÜTZ STD-22; NAVTEX – 1 x NT-700; AIS – 1 x Furuno FA-150; GPS – 1 x Furuno GP-150; Satcom – 2 x BEAM INMARSAT; GMDSS – 2 x Inmarsat C, Area 1; VHF – 3 x TRON TR20 GMDSS; H Com – 1 x JOTRON PSU 7001	







Address: Mikayil Useynov street 2, AZ 1003, Baku, Azerbaijan Republic

Phone: (+99412) 404 37 00 | **Fax:** (+99412) 404 38 00

Email: projects@asco.az | **Web:** www.asco.az

Direct Contacts:

Phone: (+99412) 404 37 15; (+99412) 404 37 40