



AZERBAIJAN
CASPIAN SHIPPING
COMPANY



GURBAN ABASOV

V E S S E L S P E C I F I C A T I O N S



600t Crane Vessel / Deck space 4250,0 m² / Deck strength 5t/m² /
Flotel Accommodation 187 pax + crew 217 max pob



Vessel Specifications

Dimensions

Length overall, m	138,4
Length between perpendiculars, m	121,75
Breadth overall, m	54,0
Hull height up to the main deck, m	9,0
Hull height up to the upper deck, m	13,0
Overall height, m	59
Draft, m	4,0
Displacement of vessel fully loaded,	10650
Displacement of the vessel unloaded, t	3993
Deadweight, t	3343
Net tonnage, t	6000
Gross tonnage, t	19813

Capacities

Crew, person	56
Speed, knots	11,4
Clear deck area, m ²	4250,0
Clear deck area (max L x B)	85 x 50
Cargo on deck, t	1400
Cargo in hold, t	200
Deck strength, t/m ²	5
Deck strength, t/m ²	10
Fuel, t	600
Oil, t	40,0
Fresh water, t	100
Endurance, days	30

General Data

IMO number	8410172
Port of registry / Call sign	Baku / 4JCI
Purpose Of The Ship	Catamaran-type Crane Vessel
Flag	Azerbaijan
Year built / builder	1988 / "Wartsila" JSC Shipyard Turku city, Finland
Class	KM (*) L3[1] AUT2 Special Purposes Ship-Catamaran

Machinery and Propulsion

Main engines: Wartsila Vassa 6R32 type Diesel engine with a capacity of 3x1845 kW (3 x 2510 e.h.p.) at 750 rpm.

Diesel generators: 3 x diesel harbor generators - "Baykal-300" type diesel with a capacity of 3 x 220 kW (3 x 300 e.h.p) at 1500 rpm. Generators manufactured by "Stremberg" with a capacity of 3 x 275 kVA at 1500 rpm, voltage 660V, 50 Hz.

Emergency generators: One emergency diesel generator. Diesel generator with a capacity of 110kW (150 h.p.) at 1500 rpm, a generator with a capacity of 125 kVA, voltage 380 V and 50Hz frequency

Anchor Handling, Mooring and Special Equipment

Anchor devices: 4 x autonomous anchor devices (double winch with one power unit) are installed for the purposes of anchoring of the ship at sea with depth up to 200 m. Anchor winches have a maximum pull of 1125 kN (112.5 tons). The holding power of the drum brake tape is 1850 kN (185t).

Anchors: Special anchors (6 basic weighing 10000 kg each and 2 weighing 11100 kg each) for anchoring the ship. Each anchor is equipped with a signal buoy (8 pcs.) with lamps and radar reflectors to indicate the location of the anchor.

Crane Characteristics

Crane cargo capacity, t	600
-------------------------	-----

Safety Equipment

Life Boats	2 x 65
MES	2 x 253
Lifejackets	314
Immersion Suits	25
FRB	15

Accommodation

Max per LOB, person	103
1 berth cabins	17
2 berth cabins	27
4 berth cabins	8
Hospital	1

Navigation Equipment

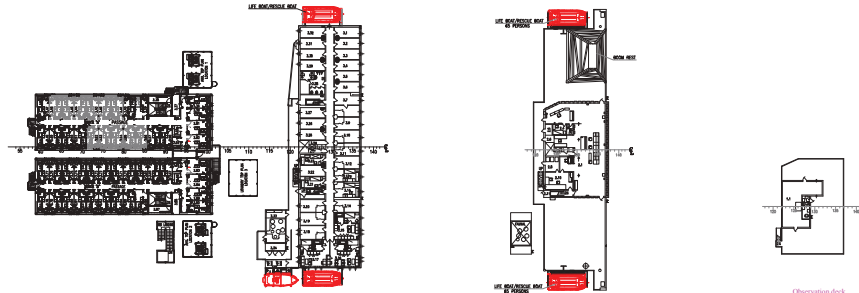
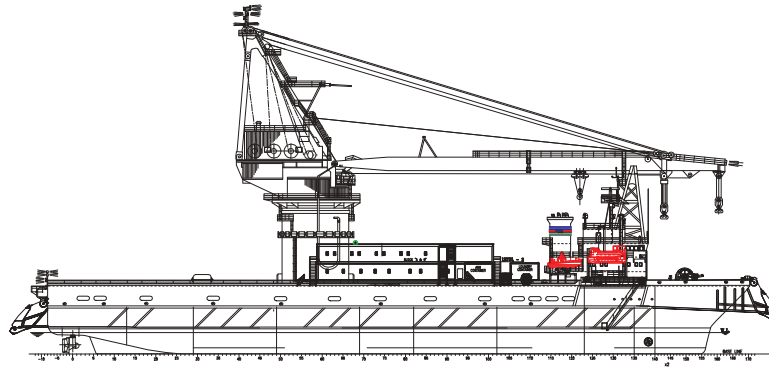
MF/HF FS-2570 - 1pcs, VHF FM-8500-2pcs, Kenwood-760(G) - 1 pcs, R/buy McMurdo E3a - 1pcs, VHF McMurdo R1 - 3 pcs, McMurdo RT9 SART - 2 pcs, UAIS FA-150 - 1 pcs, VHF ICOM IC-M25 - 2 pcs, Kenwood TK-2207 - 3 pcs, RLS FAR-2817 - 2 pcs, INM-C Felcom-15 - 1 pcs, INM. TT-3000 SSAS - 1 pcs



Gurban Abasov

VESSEL SPECIFICATIONS

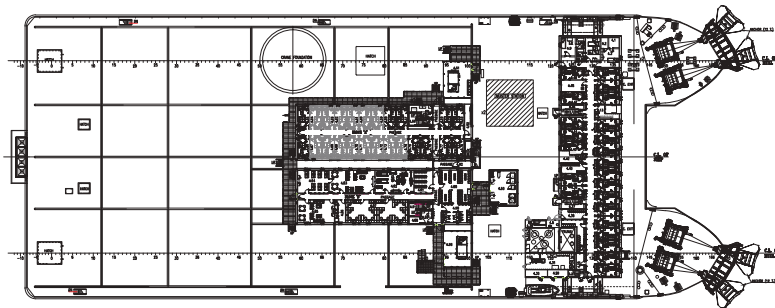
600t Crane Vessel / Deck space 4250,0 m² / Deck strength 5t/m²/ Flotel Accommodation 187 pax + crew
217 max pob



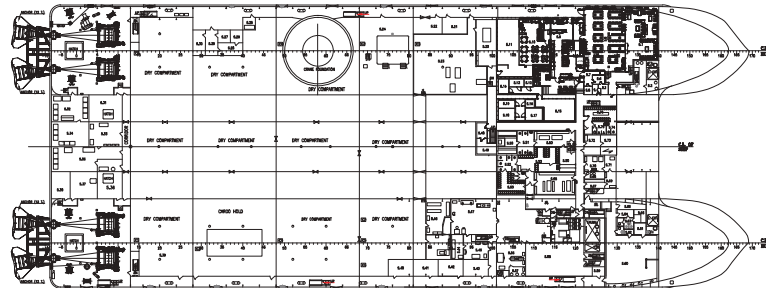
First Bridge deck

Bridge deck

Observation deck



Upper deck



Main deck



Below main deck



Gurban Abasov

VESSEL SPECIFICATIONS

600t Crane Vessel / Deck space 4250,0 m² / Deck strength 5t/m²/ Flotel Accommodation 187 pax + crew

217 max pob



Address: 2, Neftchilar Avenue, AZ 1003, Baku, Azerbaijan Republic

Phone: (+99412) 404 37 00 | **Fax:** (+99412) 404 38 00

Email: projects@asco.az | **Web:** www.asco.az

Direct Contacts:

Phone: (+99412) 404 37 15; (+99412) 404 37 40