



AZERBAIJAN
CASPIAN SHIPPING
COMPANY



Derrick Barge Azerbaijan (DBA)

V E S S E L S P E C I F I C A T I O N S



SWL 2500T Crane vessel / Max POB 195 Person



Dimensions	
Length overall, m	127
Length between perpendiculars, m	121
Breadth overall, m	34,5
Hull height up to the main deck, m	7,5
Hull height up to the upper deck, m	11,0
Overall height, m	64
Draft fully laden, m	6,18
Light draft counter balanced (free of provisions, free of ballast) (bow / stern)	1,38 / 6,18
Displacement of vessel fully loaded with cargo, t	21392
Displacement of the vessel unloaded, t	12179
Deadweight, t	9213
Net tonnage, t	4001
Gross tonnage, t	11264

Capacities	
Crew, person	27
Installation staff, person	168
Speed at 4,5m draught, knots	-----
Cargo deck, surface area, m2	952
Specific load on the deck, t/m2	10
Helicopter deck, diameter in meters	23
Fuel reserves, m3	695
Lubricating oil, m3	29,9
Fresh water, m3	1200
Bilge water, m3	107,5
Fuel consumption, kg/h	300
Oil consumption, kg/h	3,5
Endurance, days	30

General Data	
IMO number	7604374
Port of registry / Call sign	Baku / 4JCJ
Purpose Of The Ship	Derrick Crane Barge
Type of the Ship	Seagoing derrick barge with a crane on the aft of the hull, free deck space, helicopter deck and with a central control panel on the bow of the ship.
Flag	Azerbaijan
Year built / builder	1980 / "Bloom and Voss", Hamburg, Germany
Class	KM1 1A2

Machinery and Propulsion	
Main engines: 12ASV 25/30 model 3 x diesel engines manufactured by "Zulzer" with a capacity of 3 x 2147 kW (3 x 2920) at 1000 rpm.	
Main propellers : 2 x 2,8m diameter controllable propeller screws on the fixed nozzle, left rotating, 4 bladed, made of nickel – aluminum multicomponent bronze.	
Bow thruster: With a capacity of 441,2 kW (600 BHP), generating 7400 KGF draft at zero speed, with D=1600 mm, 380 rpm.	
Generator sets: 3 x diesel powered main generator sets. Generators with a voltage of 6000 V, 50 Hz at 1000 rpm, with a capacity of 3 x 2700 kW, manufactured by AEG.	
Emergency generators: One diesel generator equipped with either TBD616 V12G3 type diesel engine with a capacity of 738 kW at 1500 rpm and generator with a voltage of 380 V, frequency of 50 Hz and capacity of 618 kW (495 kW).	

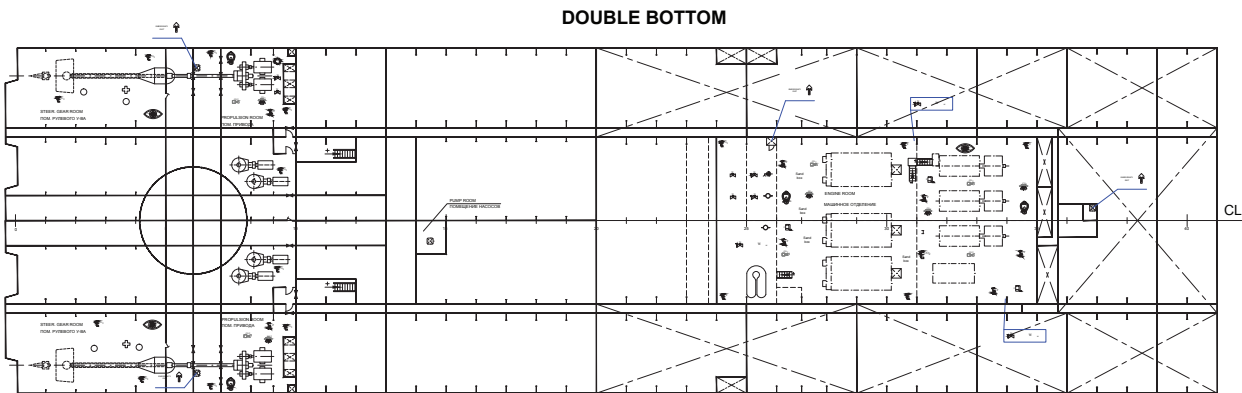
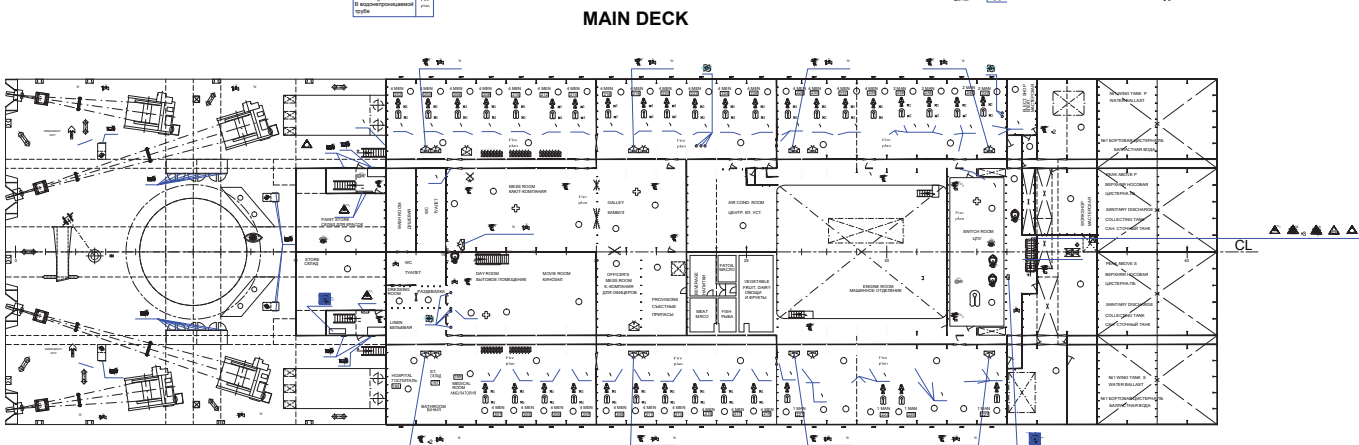
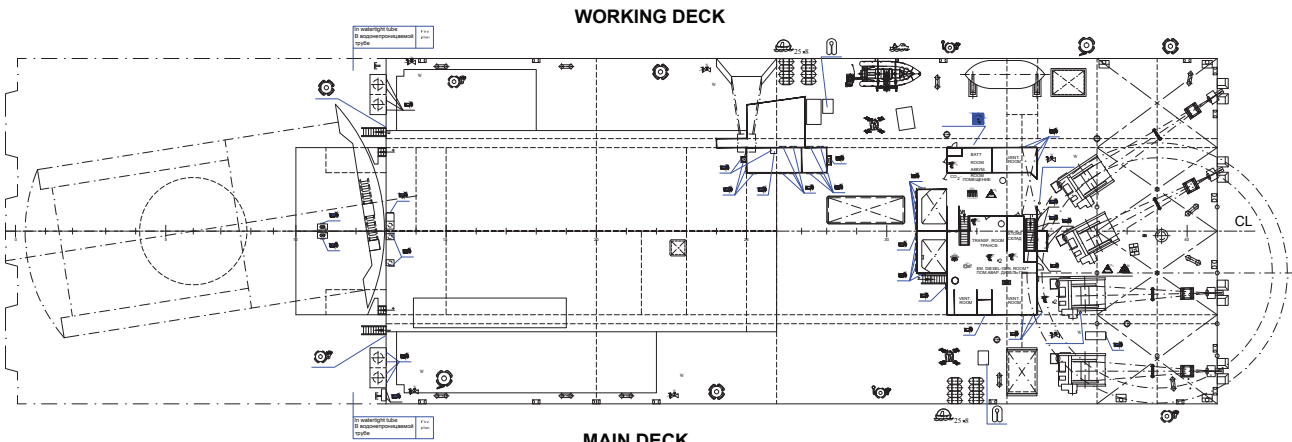
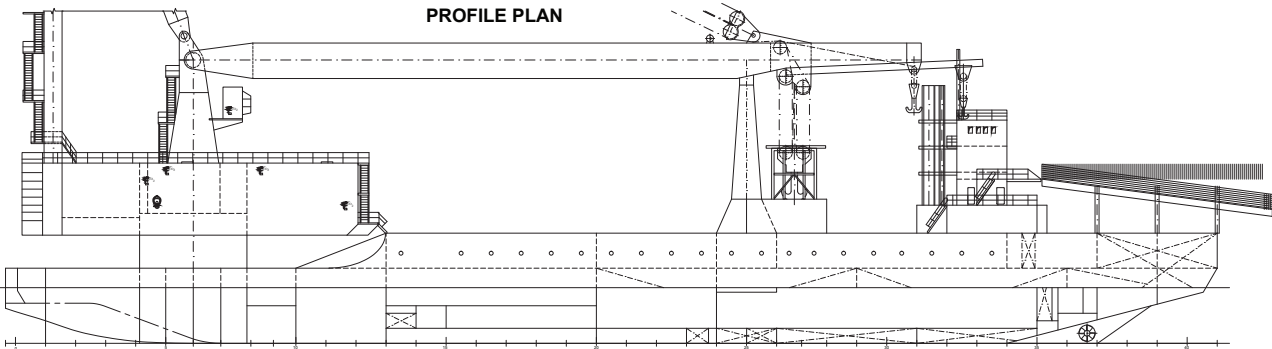
Anchor Handling & Mooring Gear	
Anchors: 8 pieces of LWT type anchors manufactured by "Bloom and Voss", each weighing 4 pieces14000 – 4 pieces18000 kq	
Anchor wire 3000m long, 71 mm diameter for 200 m depth, ultimate breaking load 225000 kg.	
Anchorage winch cylinders: 3190 mm diameter, 2793 mm long, 120 t draw bar pull anchor winch, speed 78 meters per minute.	
Mooring gear: 19 pieces of D=64mm, 120m long mooring wires. Ultimate breaking load – 34800 kg.	
Mooring capstan: With capacity of 18,5 kW, 8 tons of pull force at 12 meters per minute speed of the wire.	
Additional equipment (N/A): Pile-driving equipment; Cargo-fastening equipment – 30 pieces of special blocks, with a metal frame and with dimensions of 6000 x 1000 mm, wooden part thickness 200 mm.	

Deck Crane									
General information: Heavy duty electrical swivel crane located on the aft of the ship, manufactured by "Pohlig Heckel Bleichert" Cologne, with a carrying capacity of 2000/2500 tons. Swivel bearing device – multirole roller bearing manufactured by "Rote Erde", Federative Republic of Germany. Derricking mechanism made of polyplast.									
					Crane performance				
Main hoist performance									
Crane capacity, m			handling radius		crane position				
2000 t			31,5		while rotating				
2455 t			28		dead on the aft				
2500 t			27,5		dead on the aft				
Hook height on the deck				Lifting type		Crane handling radius			
Pos.	1	2	3	Position:		1	2	3	4
	66m	61m	24m	main hoist		23m	32m	58,5m	60m
	80,5m	74,5m	30,5m	hoist 400t		26,3m	37,3m	70m	72m
	85,5m	79,0m	31,5m	hoist 30t		29,6m	41m	74m	77m

Safety Equipment	
Life rafts	16 x 25 person
Lifejackets	405
Immersion Suits	200
Rescue boat	1 x 6 person

Accommodation	
Cabins	64
Crew, person	27
Client personnel, person	168
Hospital	1

Navigation & Communication Equipment	
Radar – 1 x Furuno MU-190; Echo sounder – 1 x Furuno; Gyro compass – 1 x Standart 22; GPS – 1 x Furuno; MF/HF transceiver – 1 x Furuno; GMDSS – 1 x Inmarsat C; VHF – 2 x Furuno	





Address: Mikayil Useynov street 2, AZ 1003, Baku, Azerbaijan Republic

Phone: (+99412) 404 37 00 | **Fax:** (+99412) 404 38 00

Email: projects@asco.az | **Web:** www.asco.az

Direct Contacts:

Phone: (+99412) 404 37 15; (+99412) 404 37 40