



AZERBAIJAN
CASPIAN SHIPPING
COMPANY



TMI-2

V E S S E L S P E C I F I C A T I O N S



Flat Top Cargo Barge / Cargo Carrying Capacity 2000 MT



Dimensions

Length overall, m	90,35
Length between perpendiculars, m	90
Breadth overall, m	16,50
Breadth of the pontoon, m	16,30
Hull height up to the main deck, m	5,30
Displacement of the vessel unloaded, t	1130
Displacement of vessel fully loaded, t	3529
Light draft, m	1
Loaded draft, m	2,50
Deadweight, t	2399
Net Tonnage, t	633
Gross tonnage, t	2327,25

Capacities

Fuel capacity, t	20,9
Fresh Water, t	6
Cargo carrying capacity, t	2000
Deck strength, ton/ m ²	10
Deck strength (In 1.5 m wide zone), t/m ²	15
Dimensions of the cargo carried, m	75 x 12 x 6
Clear deck space, m ²	1320
Center of gravity position on the level of the deck, m	3
Oil consumption, kg / h	0,09
Fuel consumption, kg / h	10

General Data

IMO number	819445
Port of registry	Baku
Purpose of the Ship	The ship is designed for transportation of heavyweight and over-dimensioned cargo installed on the deck necessary for construction of offshore platforms. Loading and discharging may be carried out through horizontal method under the principle of roll - in and roll - out ships.
Type of the Ship	The TMI-2 is a dumb barge with raked bow and stern with twin skegs aft. A standard twin legged tow bridle is provided on the bow, and a series of ballast tanks (1-7) arranged in a port and starboard configuration allow good list and trim control during loading and unloading. The hull is strengthened to ice category L2. Main deck has a capacity of 15t within 1.5 meters of side and 10t over main deck and can carry cargo up to 2000t with a max CoG of 3.0 metres above the deck.
Flag	Azerbaijan
Year built / builder	1982, Compagne Fancaise D'Enterprises Metalliques, Rouen, France
Class	KMO (*) L2 [1]

Machinery and Propulsion

Diesel alternators	"D 327 / 6" type diesels with a capacity of 2 x 44,9 kW (122 BHP) at 1500 rpm. Power plants with a capacity of 2 x 50 kVa, voltage 380 V, 50 Hz.
Emergency diesel alternators	"D 327 / 6" type diesel with a capacity of 22,4 kW (30,5 BHP) at 1500 rpm. Generator with a capacity of 25 kVa, voltage 380 V, 50 Hz.

Mooring Equipment

Anchors	2 x 1250 kg (Additionally 1 more available on board)
Towing equipment	Standard towing arrangement with chains leading to a monkey's face, weakest component part being 52 mm wire with MBL of 174 t pendant line

Special Equipment

General information	Cargo lashing is performed by use of 20 pieces of shackles (rings) which are welded to the deck and located through the whole length of the guardrail. Two pieces of pushing devices in the shape of wooden bars have been installed vertically at a distance of 7,43 m between each other.
---------------------	---

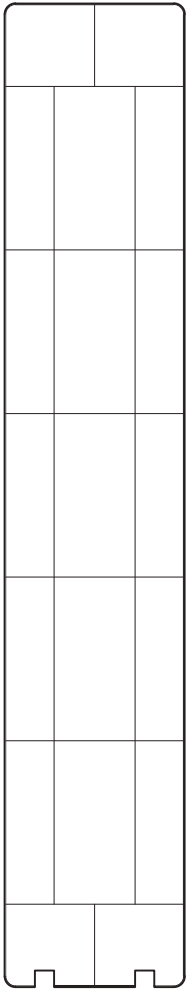
Safety Equipment

Life rafts	1 x 8 person
Life jacket	4 pcs
Immersion suit	4 pcs
Inflatable lifejackets	4 pcs

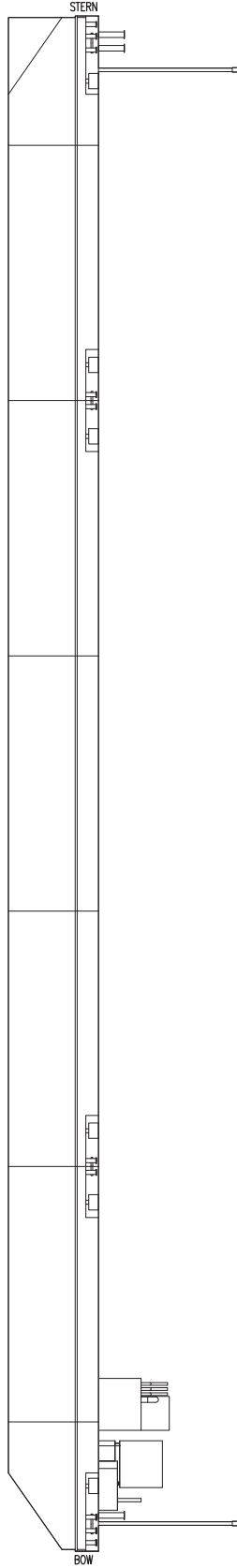


TMI-2

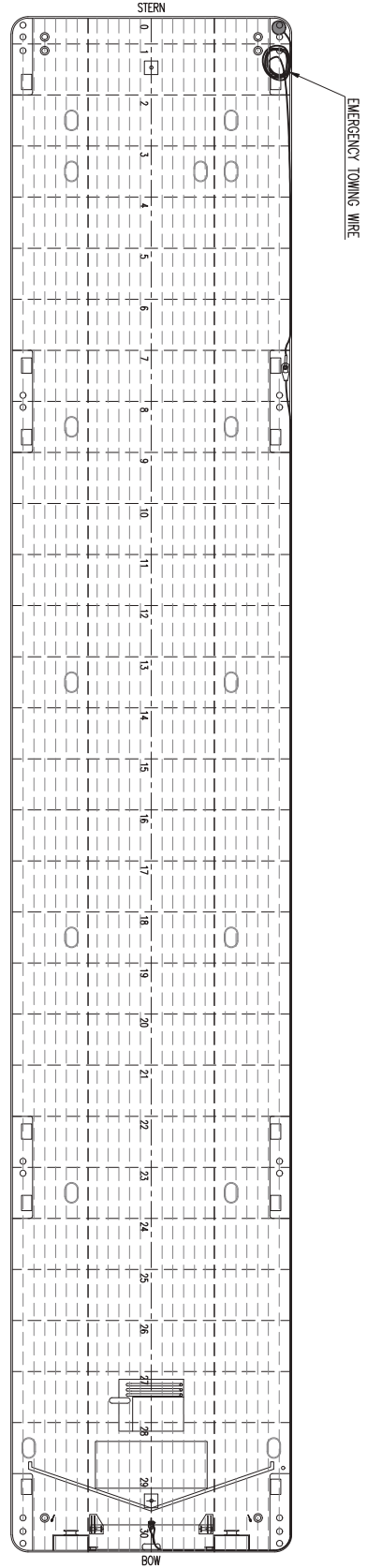
VESSEL SPECIFICATIONS
Flat Top Cargo Barge / Cargo Carrying Capacity 2000 MT



CB BALLAST TANK PLAN
SCALE 1:500



ELEVATION VIEW ON TMI-6



PLAN VIEW ON TMI-6 DECK



TMI-2

VESSEL SPECIFICATIONS
Flat Top Cargo Barge / Cargo Carrying Capacity 2000 MT



Address: 2, Neftchilar Avenue, AZ 1003, Baku, Azerbaijan Republic

Phone: (+99412) 404 37 00 | **Fax:** (+99412) 404 38 00

Email: projects@asco.az | **Web:** www.asco.az

Direct Contacts:

Phone: (+99412) 404 37 15; (+99412) 404 37 40