



**AZERBAIJAN
CASPIAN SHIPPING
COMPANY**



SHAHDAG

V E S S E L S P E C I F I C A T I O N S



Platform Supply Vessel /DP2 / FiFi 1 system / cargo deck space 716 m²



Vessel Specifications

Dimensions

Length overall, m	74,97
Breadth overall, m	16
Depth Molded (m)	7
Draft Design (m)	5,85
Maximum draft	5,85
Deadweight, t	3,133
Net tonnage, t	757
Gross tonnage, t	2,215

Capacities

Crew, person	20
Greasing oil capacity, t, m3	14.8 m3
Fuel capacity, t, m3	502 m3
Fresh Water, m3	524 m3
Drill, Ballast, m3	982 m3
Brine, m3	397.2 m3 / 2494 bbls at 100%
Liquid mud/brine, bbls	993 m3 / 6284 bbl
Desk Cargo, t	1600

General data

Port of registry / Call sign	Baku, 4JSV
IMO	9499694
Purpose Of The Ship	DP 2 Platform Supply Vessel (PSV)
Type	Supply Vessel
Flag	Azerbaijan
Maximum speed, knots	14,5
Year built / builder	Rosetti Marino SpA, Italy, 2012
Class	RINA C AUT UMS, MON-SHAFT; COMFNOISE C; COMF-VIB A; DYNAPOS AM-R, FiFi 1, Water, Spraying, OILREC; unrestricted navigation

Machinery & Propulsion

Main engines + Auxiliary Engines - Specify number and type	2 x 3,741 BHP Auxiliary engine: 2 xBF6M1015NC Auxiliary: 2x 300 kW 440V 60Hz Shaft Generator: 2x 1800kW 440V 60Hz Emergency Generator :1x 125kW 440V 60 Hz
Thruster bow Thruster stern Propellers - Specify number and Fixed or CP.	2 x 885 BHP 2 x 800 BHP 2 x RRM Kamewa Ulsteyn 72P1/t CPP 2900 mm 4 blades
Bow Thruster - Specify number and power	2 x RRM type TT1 650 DPN - 660 kW electric driven
Stern Thruster - Specify number and power	2 x RRM type TT1 650 DPN - 590 kW electric driven
Rudders - Specify number Tugger winch	2 x Rolls-Royce FB Rudder 2 x RRM Bratvaag type LAKMX22010 -10 t
Capstans	2 x RRM Bratvaag type LCX2208-8 t
Desk Crane	1 x Hydraulic crane CO.VIS type VVMT 120000 ST/1 R2 16 m SWL-5.5 ton

Additional Features

Desk Power Outlets	2 x 500 Amp Outlets (440 v)
Dispersant spraying stainless steel booms	2 x 10 m
Dispersant storage, m3	9
Power pack for oil recovery equipment	1

Manoeuvring Equipment

Dynamic Positioning System - Specify IMO Equip. Class	Class 2 (DYNAPOS AM R.) Kongsberg -Simrad K-POS DP-21 Green DPS
Main engines Joystick	2x GE 16V228 Independent Rolls Royce POSCON & Kongsberg C-Joy

Safety Equipment

Life buoy	9
Life jacket	27
Immersion suit	25

Accomodation

Max per LSA	20
1 berth cabin	12
2 berth cabins	4
1 berth hospital	1

Navigation & Communication Equipment

1x ARPA radar, 1 x GPS SIMRAD MX510, 3 x Sperry Navigat Gyro Compass, 1 x Sperry Navipilot-4000 Autopilot, 1 x JRS JHS 182 AIS, 1x Sperry Echosounder, 1 x Sperry Naviknot Speed Log, 1 x JRS JAX Weather Fax, 1 x Vision master 3 sm Radar. 2 x Imarsat C, 1 x Internal Intercom System, 2 x Sailor VHF 6222, 1 x Sailor VHF 6210, 3 x Sailor SP 3520, 1 x Sailor SE406-II EPIRB

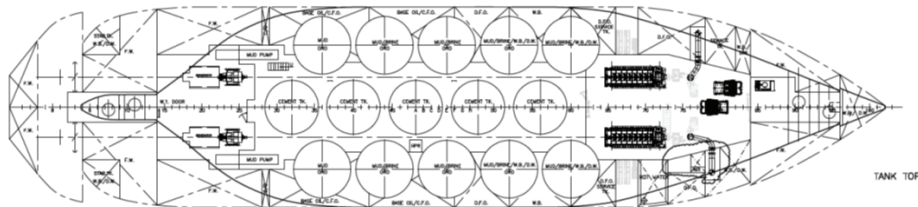
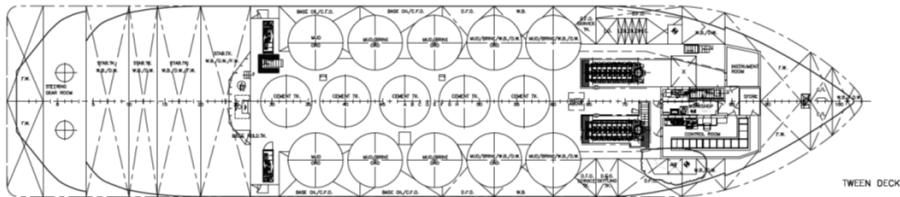
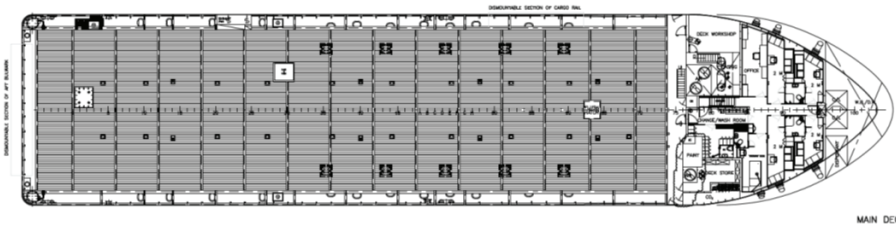
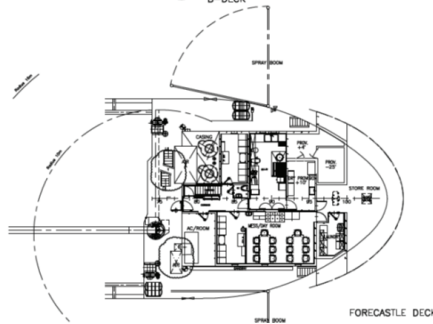
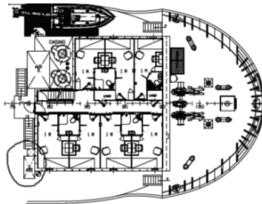
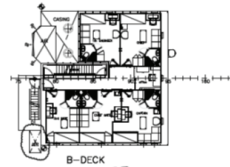
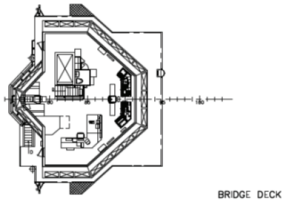
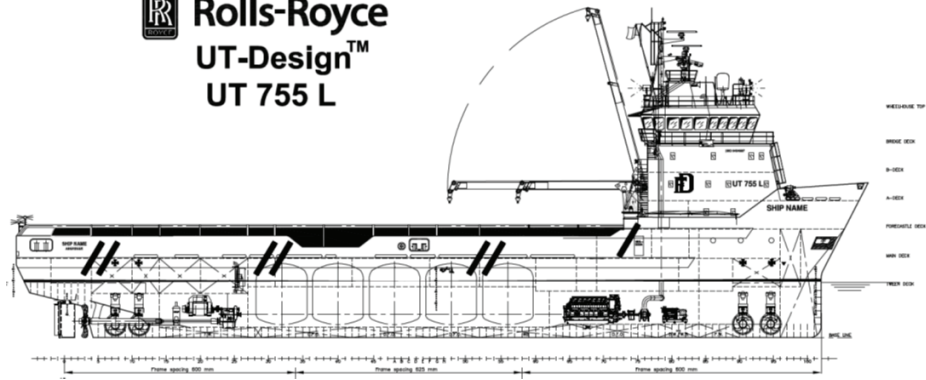


SHAH DAG

VESSEL SPECIFICATIONS

Platform Supply Vessel / DP2 / FiFi 1 system / cargo deck space 716 m2

Rolls-Royce
UT-Design™
UT 755 L



SHAH DAG

VESSEL SPECIFICATIONS
 Platform Supply Vessel / DP2 / FiFi 1 system / cargo deck space 716 m²



Address: 2, Neftchilar Avenue, AZ 1003, Baku, Azerbaijan Republic

Phone: (+99412) 404 37 00 | **Fax:** (+99412) 404 38 00

Email: projects@asco.az | **Web:** www.asco.az

Direct Contacts:

Phone: (+99412) 404 37 15; (+99412) 404 37 40