



AZERBAIJAN
CASPIAN SHIPPING
COMPANY



LANKARAN

V E S S E L S P E C I F I C A T I O N S



16,000 BHP / TBR 207.27t / DP2 / AHTS
Call Sign: 4JQD



Vessel Specifications

Dimensions

Length overall, m	74,50
Length between perpendiculars, m	64,8
Breadth overall, m	17,2
Hull height, m	8,0
Displacement of the vessel unloaded, t	2736
Displacement of vessel fully loaded, t	5714
Maximal draft, m	7,20
Summer draft, m	6,82
Deadweight, t	3000 at 6,9 draft
Net tonnage, t	821
Gross tonnage, t	2736

Capacities

Crew, person	16 (one shift)
Fresh water, m ³	537,6
Fuel tank, m ³	806
Drill water, m ³	1263,8
Mud tank, m ³	490
Brine tank, m ³	187,6
Dry Bulk tanks, m ³	220,4
Deck cargo capacity, t	850
Deck strength, ton/ m ²	10
Clear deck area, m ²	497,6
Clear deck area (max L x B)	34,8 x 14,3
Endurance	30

Speed/Fuel

Max speed	16,7 knots / 55 tons / 24 hrs
Economic speed	9,5 knots / 22 tons / 24 hrs
AH operations	35 tons / 24 hrs
Towing 75%/150t Pull	42 tons / 24 hrs
Harbor mode	1,6-2 tons / 24 hrs
Quality of fuel	MGO

General Data

IMO number	9451666
Port of registry / Call sign	Baku / 4JQDkhfl
Purpose Of The Ship	AHTS (Anchor Handling Towing and Supply) Vessel
Flag	Azerbaijan
Year built / builder	2012, Paxocean Engineering, Singapore
Class	

Machinery and Propulsion

Main engines	MAN 2 x 8000 BHP
Generators	2 x 550 kW diesel generators at 3 x 440V, 60 HZ; 1 x 90 kW emergency diesel generator; 2 x Shaft generator at 2000 kW each
Propellers	2 x CP propellers in fixed nozzles
Bow thruster	1 x Tunnel thruster 880 kW = 1180 BHP = approx. 15t; 1 x Azimuth thruster 880 kW = 1180 BHP = approx. 15t.
Stern thruster	1 x Tunnel thruster 880 kW = 1180 BHP = approx. 15t

Special Equipment

Towing / AH winch	1 x Oilstates double drum waterfall, low pressure; Stall line pull of 350 tons; Brake holding capacity at 680 tons at 1st layer of rope on the drum
Towing Wire Drum	5,200m x 77 mm wire capacity
Anchor Handling Drum Wire	5,200m x 77 mm wire capacity
1 x Sec Winch	1 fixed drum with 2 dividing flanges with cut out dimension - B=1219mm; F=3499mm; L1=3696mm; L2=914mm
1 x Storage Reel	1,500mm x 77mm (spare tow wire)
Tugger Winch	2 x 20 tons nominal pull
Shark Jaw	2 x Triplex H-500 SWL 500 tons
Tow Pins	2 x Triplex H-200 SWL 250 tons
Capstan	2 x 10t
Stern Roller	1 x 500t, 6m x 3m diameter
Grapnel & J-Hook	150t
Wildcats / Gypsies	2 x 76mm (install) + 2 x 84mm spare
Rudders	2 x independent high lift flat type, LxH=2000mm x 4000mm
Rig Chain Lockers	4 x 95m ³ = 380m ³
Deck Crane	1 x Prov. crane (starboard) SWL 3 tons at 12m radius; 1 x Moveable crane - electro hydro. travelling knuckle crane on port side cargo rail, lifting capacity SWL 5 tons at 13m radius
Reefer Points	2 x 440v, 2 x 220v
DP / Joystick Control	Converteam ADP-2 system
FiFi 1 System / Oil Pollution Control	With pump capacity of 2 x 1650 m ³ / hour at 140m head, Class FiFi 1 and Monitor - 2 x 1200 m ³ / hour

Bunkering and Discharge Flow Rate

Fuel	2 x 200m ³ / hour at 90m head
Fresh Water	2 x 200m ³ / hour at 90m head
Drill water	1 x 200m ³ / hour at 90m head
Brine	1 x 75m ³ / hour at 90m head
Bulk plan	220 m ³ in 4 tanks; 82 psi / 5,6 bar
Liquid mud	2 x 75m ³ / hour at 90m head
Flow meter	2 for FO; 2 for FW

Accommodation

Officer / Crew	18
Berth total	42
Cabins total	18
Hospital	1

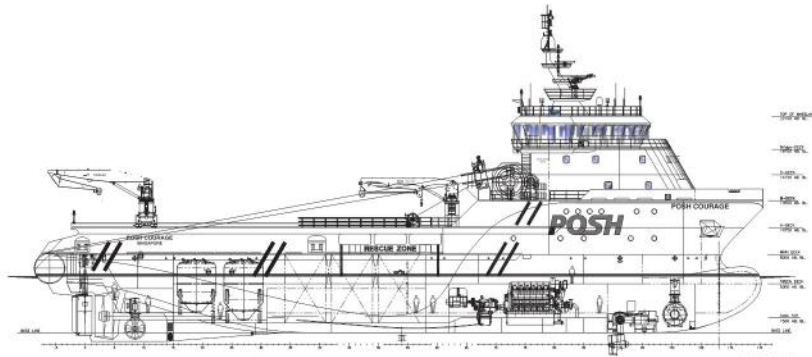
Navigation Equipment

MF/HF, Watchreceiver, VHF fixed, VHF portable, Inmarsat C, Navtex, Autopilot, Radar ARPA, Surface plotting, DGPS, Gyro, Echo Sounder, AIS Transponder, FBB500, VDR etc.

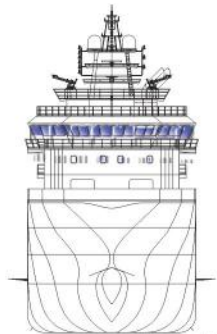


LANKARAN

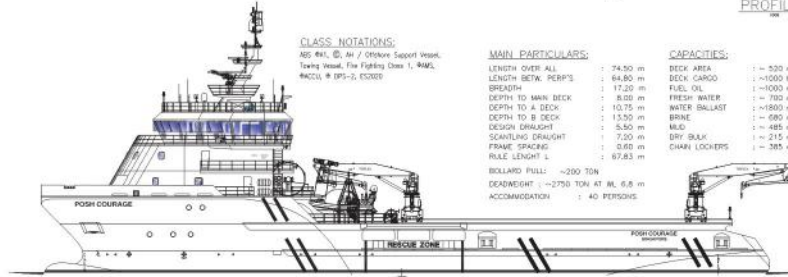
VESSEL SPECIFICATIONS
16,000 BHP / TBR 207.27t / DP2 / AHTS Call Sign: 4JQD



PROFILE



FRONT VIEW



PROFILE PORT

CLASS NOTATIONS:

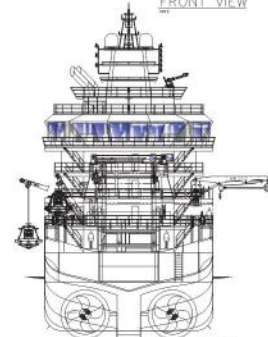
ASB 441, 0, A1 / Offshore Support Vessel,
Towing Vessel, Fire Fighting Class 1, RAGL,
#CCU, # 0P1-0, 03000

MAIN PARTICULARS:

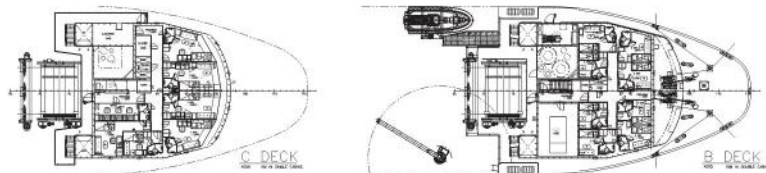
LENGTH OVER ALL : 74.50 m
LENGTH BETW. PERPS : 64.50 m
BREADTH : 17.20 m
DEPTH TO MAIN DECK : 8.00 m
DEPTH TO A DECK : 10.75 m
DEPTH TO B DECK : 13.50 m
DESIGN DRAUGHT : 5.50 m
SEAWING EMBLIGHT : 7.50 m
FRAME SPACING : 0.60 m
RULE LENGTH L : 67.63 m
BELLARD PULL : ~250 TON
DEADWEIGHT : ~2750 TON AT ML 6.8 m
ACCOMMODATION : 40 PERSONS

CAPACITIES:

DECK AREA : ~ 520 m²
DECK CARGO : ~4000 ton
FUEL OIL : ~1000 m³
FRESH WATER : ~ 700 m³
WATER BALLAST : ~1500 m³
BRINE : ~ 680 m³
MILK : ~ 485 m³
DRY BULK : ~ 212 m³
CHURN LOCKERS : ~ 385 m³

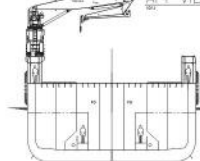


AFT VIEW

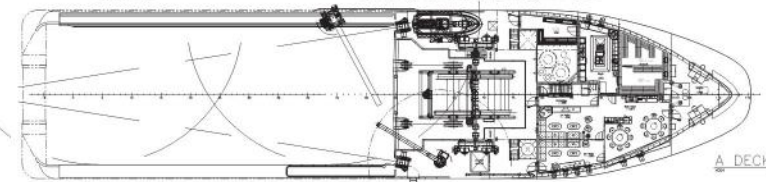


C DECK

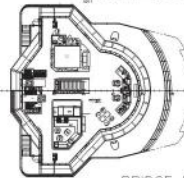
B DECK



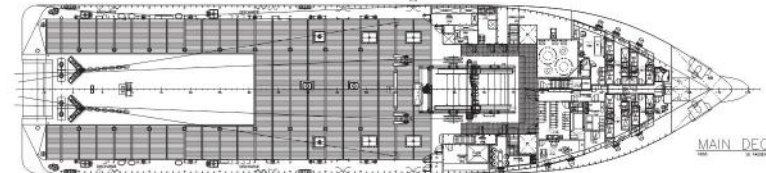
MIDSHIP SECTION



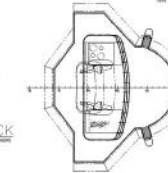
A DECK



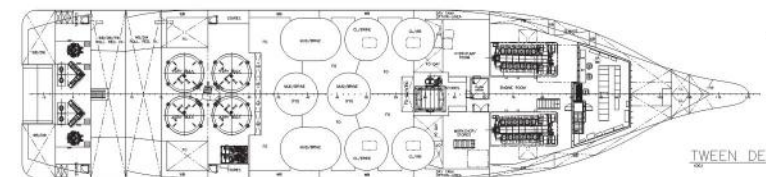
BRIDGE DECK



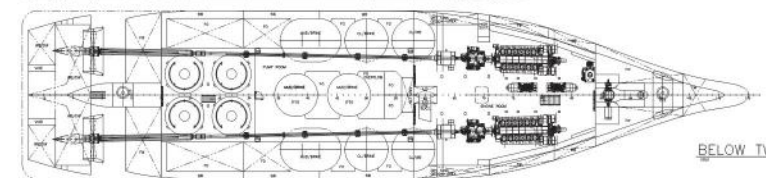
MAIN DECK



TOP OF WHEELHOUSE



TWEEN DECK



BELOW TWEEN DECK



LANKARAN

VESSEL SPECIFICATIONS

16,000 BHP / TBR 207.27t / DP2 / AHTS Call Sign: 4JQD



Address: 2, Neftchilar Avenue, AZ 1003, Baku, Azerbaijan Republic

Phone: (+99412) 404 37 00 | **Fax:** (+99412) 404 38 00

Email: projects@asco.az | **Web:** www.asco.az

Direct Contacts:

Phone: (+99412) 404 37 15; (+99412) 404 37 40