



AZERBAIJAN
CASPIAN SHIPPING
COMPANY



STB-1

V E S S E L S P E C I F I C A T I O N S



Transportation and Launch Barge with Cargo Carrying Capacity of 18000 MT



Vessel Specifications

Dimensions

Length overall, m	163
Length between perpendiculars, m	153
Breadth overall, m	45,50
Breadth of the pontoon, m	45
Hull height up to the main deck, m	12
Displacement of the vessel unloaded, t	12939,47
Displacement of vessel fully loaded, t	34466
Light draft, m	1,94
Loaded draft, m	4,59
Draft, summer freeboard, m	7,26
Deadweight, t	3816
Net Tonnage, t	7009
Gross tonnage, t	23364

Capacities

Crew, person	8
Fresh Water, m3	120
Bilge water, m3	20
Fuel capacity, m3	400
Oil capacity, m3	12
Waste oil, m3	3
Cargo carrying capacity, t	18000
Deck strength, ton/ m2	15
Dimensions of the cargo carried, m	96 x 84 x 221
Center of gravity position of cargo (horizontal / vertical), m	92 / 34
Oil consumption, kg / h	0,5
Fuel consumption, kg / h	20

General Data

IMO number	8120844
Port of registry	Baku

Purpose of the Ship: The ship is designed for transportation of oversize support blocks necessary for construction of stationery offshore platforms.

Type of the Ship: The STB-1 is a manned dumb transportation and launch barge, with accommodation for 9 persons. A wheel house, galley, engine room and 17 ballast tanks allow large modules or jackets to be taken on deck. Due to the provision of a launch skid way 127 meters long launch rails angled at 7 degrees to the stern. Right aft there are two launch rockers of 30 meters with a 3 meter breadth, which can rotate 90 degrees to allow safe launch of a jacket.

Flag	Azerbaijan
Year built / builder	1983 / "Bloom & Voss" company, Hamburg
Class	KE (*) [1] R1 Pontoon

Machinery and Propulsion

Main diesel generators	3 x "DEUTZ" model, VA 16M 816 type diesel with a capacity of 3 x 820 kW at 1500 rpm.
Generators	Produced by "Siemens" company, 970 kW, 380 V, 50 Hz.
Emergency diesel generator	"DEUTZ" model, VA 16M816 type diesel with a capacity of 415kW, 1500 rpm.

Mooring Equipment

Anchors	2 x anchors: 1 x 10940kg and 1 x 11120 kg
---------	---

Towing equipment: Tow bridle on stern and aft side of the barge – Alloy safety pin bow shackle with SWL of 120t; Triangle plate with MBL of 750t. Chamfered base Smith Brackets with SWL of 204t; Pennant wire of 77mm in diameter and 20 meters long, MBL – 332 tons; Pennant wire of 76 mm in diameter and 10 meters long with MBL of 327 tons; Sling leg wire rope – 64 mm in diameter and 25 meters long with SWL of 54,8 tons; Mooring chain sling – 76 mm in diameter, 142 links, MBL – 474 tons.

Emergency towing equipment: Mooring chain sling – 76 mm in diameter, 52 links with MBL of 474 tons; Single leg wire rope – 76 mm in diameter and 150 meters long, with MBL of 370 tons.

Anchor wires	64 mm in diameter, L=3000m
Capstan	2 x 241 KN

Special Equipment

General information: There are two launch ways each 127m long with the slope of 7 degrees to the stern direction. There are 30 meters long and 3 meters wide two balance levers in the stern, one for each launch ways and with maximum load on each constitutes 8,5 thousand tons. The levers may rotate 90 degrees. Fixation of support blocks on the deck is carried out through the use of special fixing hardware.

Safety Equipment

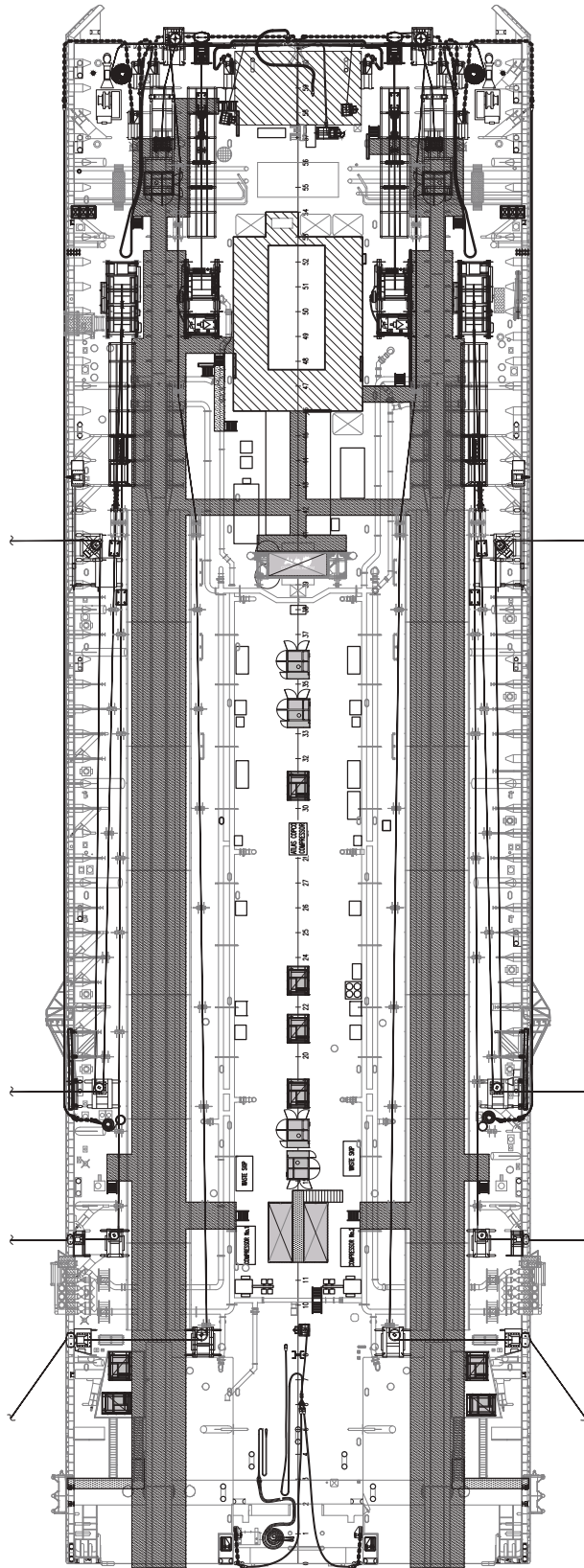
Life rafts	2 x 20 person
Life jacket	12 pcs
Immersion suit	14 pcs
Communication Equipment	
Inmarsat: 1 x Sailor; VHF: 1 x Sailor	



STB-1

VESSEL SPECIFICATIONS

Transportation and Launch Barge with Cargo Carrying Capacity of 18000 MT



STB-1

VESSEL SPECIFICATIONS

Transportation and Launch Barge with Cargo Carrying Capacity of 18000 MT



Address: 2, Neftchilar Avenue, AZ 1003, Baku, Azerbaijan Republic

Phone: (+99412) 404 37 00 | **Fax:** (+99412) 404 38 00

Email: projects@asco.az | **Web:** www.asco.az

Direct Contacts:

Phone: (+99412) 404 37 15; (+99412) 404 37 40