



AZERBAIJAN  
CASPIAN SHIPPING  
COMPANY



# GENERAL ALIAGHA SHIKHLINSKY

V E S S E L   S P E C I F I C A T I O N S



Crane Vessel with SWL of 600 MT / Deck space 4250 m<sup>2</sup> / Deck strength 5t/m<sup>2</sup>



## Dimensions

Length overall, m	139,28
Length between perpendiculars, m	121,75
Breadth overall, m	54,0
Breadth of each hull, m	17,0
Distance between hulls, m	20,0
Hull height up to the main deck, m	9,0
Hull height up to the upper deck, m	13,0
Overall height, m	59
Estimated draft, m	4,0
Displacement of vessel fully loaded with cargo, t	13993
Displacement of the vessel unloaded, t	10650
Deadweight, t	3343
Net tonnage, t	6000
Gross tonnage, t	19813

## Capacities

Crew, person	60
Speed, knots	11,4
Sea going capacity, points	6
Clear deck area, m <sup>2</sup>	4250,0
Clear deck area (max L x B)	85 x 50
Freight carrying capacity, t	1600
Cargo on deck, t	1400
Cargo in hold, t	200
Deck strength, t/m <sup>2</sup>	5
Deck strength, t/m <sup>2</sup> (platform between the crane and superstructure 10x10m)	10
Fuel reserves, t	772,2
Oil, t	23,3
Fresh water, t	121,76
Utility water, t	685,64
Fuel consumption, kg/h	220
Endurance, days	30

## General Data

IMO number	8129668
Port of registry / Call sign	Baku / 4JCK
Purpose Of The Ship	Catamaran-type Crane Vessel

**Type of the Ship:** Self-propelled, steel, double hull marine vessel with swivel crane having carrying capacity of 2 x 300 tons on the port side hull and with an engine room on the starboard side hull and with a continuous main deck, flat transom stern.

Flag	Azerbaijan
Year built / builder	1987 / "Wartsila" JSC Shipyard Turku city, Finland
Class	KM (*) L2[1] AUT2 Special Purposes Ship-Catamaran

## Machinery and Propulsion

**Main engines:** Wartsila Vassa 6R32 type Diesel engine with a capacity of 3x1850 kW (3 x 2510 e.h.p.) at 750 rpm.

**Azimuth thruster:** Two propulsion electric motors operating with direct current and with capacity of 2 x 1700 kW at 1000 rpm, 220V voltage and with two pieces of four - bladed, 2930 mm diameter propeller screw on the nozzles of "Aquamaster" type rudder propellers.

**Bow thruster:** With CPP (controllable pitch propeller) on both hulls, with a capacity of 400 kW.

**Diesel generators:** 3 x diesel harbor generators - "Baykal-300" type diesel with a capacity of 3 x 220 kW (3 x 300 e.h.p) at 1500 rpm. Generators manufactured by "Stremberg" with a capacity of 3 x 275 kVA at 1500 rpm, voltage 660V, 50 Hz.

**Emergency generators:** One emergency diesel generator. Diesel generator with a capacity of 110kW (150 h.p.) at 1500 rpm, a generator with a capacity of 125 kVA, voltage 380 V and 50Hz frequency

## Anchor Handling, Mooring and Special Equipment

**Anchor devices:** 4 x autonomous anchor devices (double winch with one power unit) are installed for the purposes of anchoring of the ship at sea with depth up to 200 m. Anchor winches have a maximum pull of 1125 kN (112.5 tons). The holding power of the drum brake tape is 1850 kN (185t).

**Wire drums:** 2 x wire drums on each bow winch with a capacity of 1500 m of steel wire in diameter of 78 mm and 51mm. The power of the drive motor is 370kW. Whereas, there are two wire drums stern winches with a capacity of 1500 m of steel wire in diameter of 51 mm.

**Anchors:** Special anchors (6 basic weighing 10000 kg each and 2 weighing 11100 kg each) for anchoring the ship. Each anchor is equipped with a signal buoy (8 pcs.) with lamps and radar reflectors to indicate the location of the anchor.

**Mooring gear:** 2 x electric drive spikes with a pulling power of 120kN (12t), 2 x electric mooring winches with a pulling power of 160kN (16t).

**Diving equipment:** N/A

**Additional equipment:** N/A

## Deck Crane

**General information:** "Offshore" type electrical swivel crane (360 degrees) manufactured by "KONE" Holland, with a carrying capacity of 600 tons. The crane is single boom type and is installed on the port side hull of the ship.

The crane has been equipped with a main girder with lifting capacity of 600 t which can quickly be attached to the main lifting of the crane. Rotation speed of the crane is 0.25 RPM. Crane operation is permissible during sea swells up to 3 points, and wind force up to 12 mps (6 points).

**Boom:** 2 x main lifting mechanisms with a lifting capacity of 2 x 300 t (2 x 220 kW DC electric motors);

1 x auxiliary, SWL=150t (1 x 220 kW DC electric motor) (Aux1);

1 x auxiliary, SWL=20t (1 x 100 kW DC electric motor) (Aux2); The

simultaneous work of the main lift of 2 x 300 tons and the auxiliary lift of 150 tons is allowed.

The boom lifting mechanism is equipped with two direct current electric motors with a capacity of 2 x 220 kW. The rotation mechanism is equipped with six DC (direct current) electric motors in vertical position and with a capacity of 6 x 100 kW.

**Crane boom maximum reach above the water:** Main: 39m / Aux1: 69m / Aux2: 67m

**Minimum reach:** Main: 26m / Aux1: 30m / Aux2: 9m

**Lifting height:** Main: 75+29m / Aux1: 60+45m / Aux2: 75+29m

**Lifting speed at the max. load, m/min:** Main: 2,9 / Aux1: 0-6 / Aux2: 0-30

## Safety Equipment

Life Boats	2 x 65
MES	2 x 253
Lifejackets	135
Immersion Suits	122
FRB	6

## Accommodation

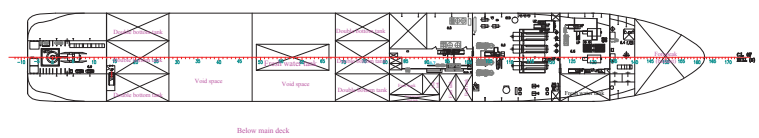
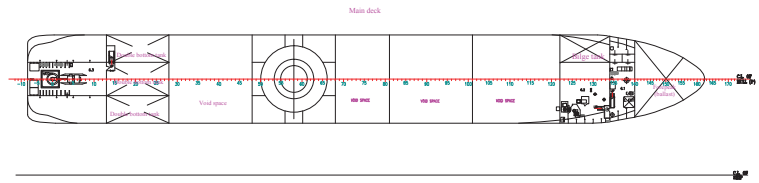
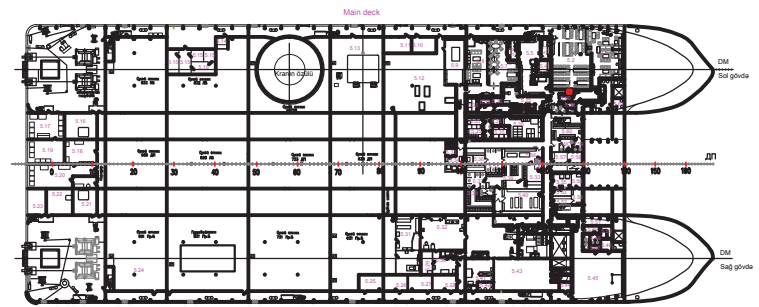
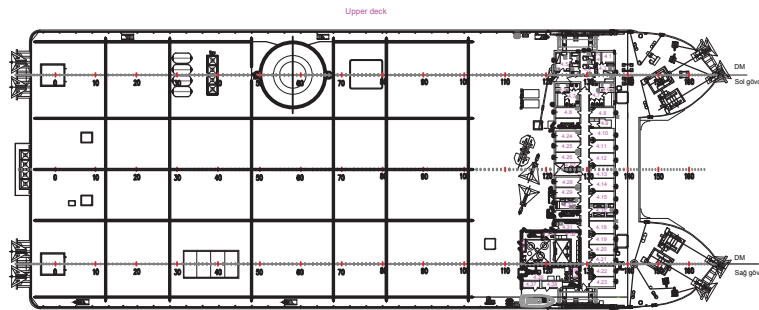
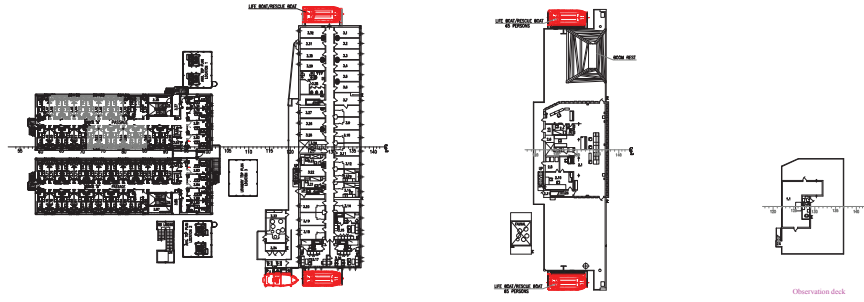
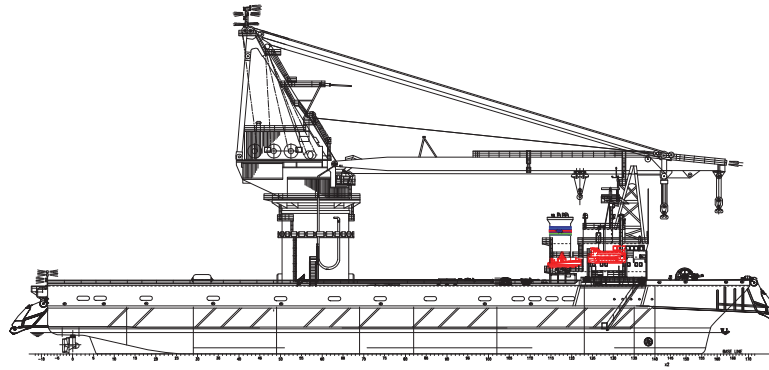
Max per LOB, person	101
1 berth cabins	17
2 berth cabins	26
4 berth cabins	8
Hospital	1

## Navigation Equipment

MF/HF FS-2570 - 1pcs, VHF FM-8500-2pcs, Kenwood-760(G) - 1 pcs, R/buy McMurdo E3a - 1pcs, VHF McMurdo R1 - 3 pcs, McMurdo RT9 SART - 2 pcs, UAIS FA-150 - 1 pcs, VHF ICOM IC-M25 - 2 pcs, Kenwood TK-2207 - 3 pcs, RLS FAR-2817 - 2 pcs, INM-C Felcom-15 - 1 pcs, INM, TT-3000 SSAS - 1 pcs



# GA Specifications



**General Aliagha Shikhlin'sky**

VESSEL SPECIFICATIONS  
Crane Vessel with SWL of 600 MT / Deck space 4250 m<sup>2</sup> / Deck strength 5t/m<sup>2</sup>



**Address:** 2, Neftchilar Avenue, AZ 1003, Baku, Azerbaijan Republic

**Phone:** (+99412) 404 37 00 | **Fax:** (+99412) 404 38 00

**Email:** [projects@asco.az](mailto:projects@asco.az) | **Web:** [www.asco.az](http://www.asco.az)

**Direct Contacts:**

**Phone:** (+99412) 404 37 15; (+99412) 404 37 40