



AZERBAIJAN
CASPIAN SHIPPING
COMPANY



SUQOVUŞAN

V E S S E L S P E C I F I C A T I O N S



Platform Supply Vessel /DP2 / FiFi 1 system / cargo deck space 716 m²



Vessel Specifications

Dimensions

| | |
|--------------------|-------|
| Length overall, m | 74,97 |
| Breadth overall, m | 16 |
| Depth Molded (m) | 7 |
| Draft Design (m) | 5,85 |
| Maximum draft | 5,85 |
| Deadweight, t | 3,133 |
| Net tonnage, t | 757 |
| Gross tonnage, t | 2,215 |

Capacities

| | |
|------------------------------|------------------------------|
| Crew, person | 20 |
| Greasing oil capacity, t, m3 | 14.8 m3 |
| Fuel capacity, t, m3 | 502 m3 |
| Fresh Water, m3 | 524 m3 |
| Drill, Ballast, m3 | 982 m3 |
| Brine, m3 | 397.2 m3 / 2494 bbls at 100% |
| Liquid mud/brine, bbls | 993 m3 / 6284 bbl |
| Desk Cargo, t | 1600 |

General data

| | |
|------------------------------|--|
| Port of registry / Call sign | Baku, 4JSV |
| IMO | 9499694 |
| Purpose Of The Ship | DP 2 Platform Supply Vessel (PSV) |
| Type | Supply Vessel |
| Flag | Azerbaijan |
| Maximum speed, knots | 14,5 |
| Year built / builder | Rosetti Marino SpA, Italy, 2012 |
| Class | RINA C AUT UMS, MON-SHAFT; COMFNOISE C; COMF-VIB A; DYNAPOS AM-R, FiFi 1, Water, Spraying, OILREC; unrestricted navigation |

Machinery & Propulsion

| | |
|---|---|
| Main engines + Auxiliary Engines - Specify number and type | 2 x 3,741 BHP Auxiliary engine: 2 xBF6M1015NC Auxiliary: 2x 300 kW 440V 60Hz Shaft Generator: 2x 1800kW 440V 60Hz Emergency Generator :1x 125kW 440V 60 Hz |
| Thruster bow Thruster stern Propellers - Specify number and Fixed or CP. | 2 x 885 BHP 2 x 800 BHP 2 x RRM Kamewa Ulsteyn 72P1/t CPP 2900 mm 4 blades |
| Bow Thruster - Specify number and power | 2 x RRM type TT1 650 DPN - 660 kW electric driven |
| Stern Thruster - Specify number and power | 2 x RRM type TT1 650 DPN - 590 kW electric driven |
| Rudders - Specify number Tugger winch | 2 x Rolls-Royce FB Rudder 2 x RRM Bratvaag type LAKMX22010 -10 t |
| Capstans | 2 x RRM Bratvaag type LCX2208-8 t |
| Desk Crane | 1 x Hydraulic crane CO.VIS type VVMT 120000 ST/1 R2 16 m SWL-5.5 ton |

Additional Features

| | |
|---|-----------------------------|
| Desk Power Outlets | 2 x 500 Amp Outlets (440 v) |
| Dispersant spraying stainless steel booms | 2 x 10 m |
| Dispersant storage, m3 | 9 |
| Power pack for oil recovery equipment | 1 |

Manoeuvring Equipment

| | |
|--|---|
| Dynamic Positioning System - Specify IMO Equip. Class | Class 2 (DYNAPOS AM R.) Kongsberg -Simrad K-POS DP-21 Green DPS |
| Main engines | 2x GE 16V228 |
| Joystick | Independent Rolls Royce POSCON & Kongsberg C-Joy |

Safety Equipment

| | |
|----------------|----|
| Life buoy | 9 |
| Life jacket | 27 |
| Immersion suit | 25 |

Accommodation

| | |
|------------------|----|
| Max per LSA | 20 |
| 1 berth cabin | 12 |
| 2 berth cabins | 4 |
| 1 berth hospital | 1 |

Navigation & Communication Equipment

1x ARPA radar, 1 x GPS SIMRAD MX510, 3 x Sperry Navigat Gyro Compass, 1 x Sperry Navipilot-4000 Autopilot, 1 x JRS JHS 182 AIS, 1x Sperry Echosounder, 1 x Sperry Naviknot Speed Log, 1 x JRS JAX Weather Fax, 1 x Vision master 3 sm Radar. 2 x Imarsat C, 1 x Internal Intercom System, 2 x Sailor VHF 6222, 1 x Sailor VHF 6210, 3 x Sailor SP 3520, 1 x Sailor SE406-II EPIRB

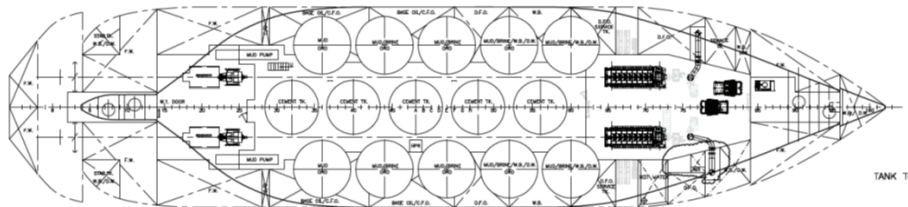
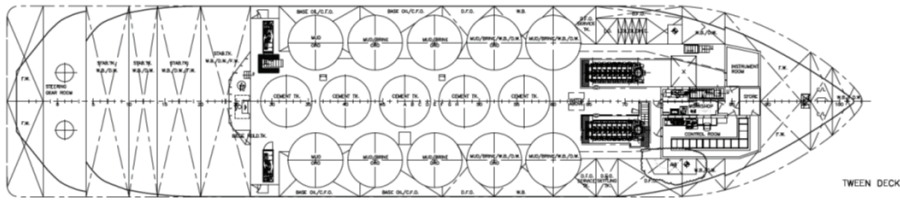
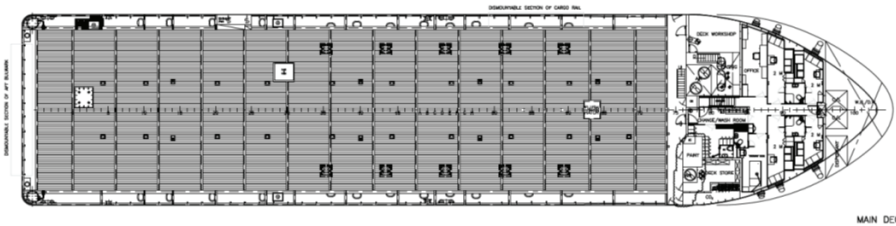
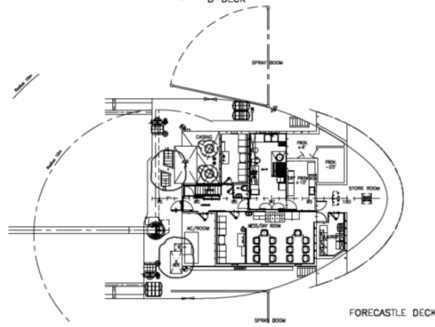
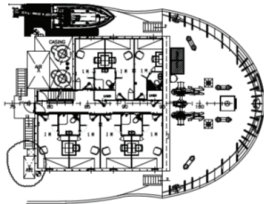
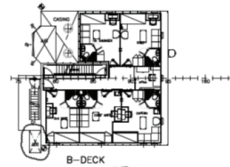
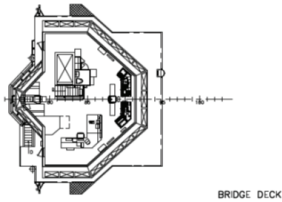
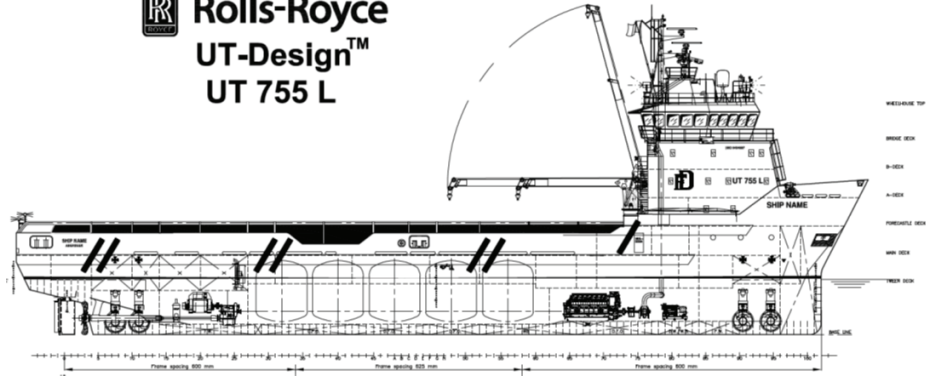


SUQOVUSHAN

VESSEL SPECIFICATIONS

Platform Supply Vessel / DP2 / FiFi 1 system / cargo deck space 716 m2

Rolls-Royce
UT-Design™
UT 755 L



SUQOVUSHAN

VESSEL SPECIFICATIONS

Plat orm Supply Vessel / DP2 / FiFi 1 system / cargo deck space 716 m²



Address: 2, Neftchilar Avenue, AZ 1003, Baku, Azerbaijan Republic

Phone: (+99412) 404 37 00 | **Fax:** (+99412) 404 38 00

Email: projects@asco.az | **Web:** www.asco.az

Direct Contacts:

Phone: (+99412) 404 37 15; (+99412) 404 37 40