



AZERBAIJAN  
CASPIAN SHIPPING  
COMPANY



# STB-1

V E S S E L   S P E C I F I C A T I O N S



Transportation and Launch Barge with Cargo Carrying Capacity of 18000 MT



| Dimensions                             |          |
|--|----------|
| Length overall, m                      | 163      |
| Length between perpendiculars, m       | 153      |
| Breadth overall, m                     | 45,50    |
| Breadth of the pontoon, m              | 45       |
| Hull height up to the main deck, m     | 12       |
| Displacement of the vessel unloaded, t | 12939,47 |
| Displacement of vessel fully loaded, t | 34466    |
| Light draft, m                         | 1,94     |
| Loaded draft, m                        | 4,59     |
| Draft, summer freeboard, m             | 7,26     |
| Deadweight, t                          | 3816     |
| Net Tonnage, t                         | 7009     |
| Gross tonnage, t                       | 23364    |

| Capacities   |               |
|--|---------------|
| Crew, person   | 8             |
| Fresh Water, m3  | 120           |
| Bilge water, m3  | 20            |
| Fuel capacity, m3  | 400           |
| Oil capacity, m3   | 12            |
| Waste oil, m3  | 3             |
| Cargo carrying capacity, t                                     | 18000         |
| Deck strength, ton/ m2   | 15            |
| Dimensions of the cargo carried, m                             | 96 x 84 x 221 |
| Center of gravity position of cargo (horizontal / vertical), m | 92 / 34       |
| Oil consumption, kg / h  | 0,5           |
| Fuel consumption, kg / h                                       | 20            |

| General Data  |  |
|---|--|
| IMO number  | 8120844                                |
| Port of registry  | Baku                                   |
| <b>Purpose of the Ship:</b> The ship is designed for transportation of oversize support blocks necessary for construction of stationery offshore platforms.   |  |
| <b>Type of the Ship:</b> The STB-1 is a manned dumb transportation and launch barge, with accommodation for 9 persons. A wheel house, galley, engine room and 17 ballast tanks allow large modules or jackets to be taken on deck. Due to the provision of a launch skid way 127 meters long launch rails angled at 7 degrees to the stern. Right aft there are two launch rockers of 30 meters with a 3 meter breadth, which can rotate 90 degrees to allow safe launch of a jacket. |  |
| Flag  | Azerbaijan                             |
| Year built / builder  | 1983 / "Bloom & Voss" company, Hamburg |
| Class   | KE (*) [1] R1 Pontoon                  |

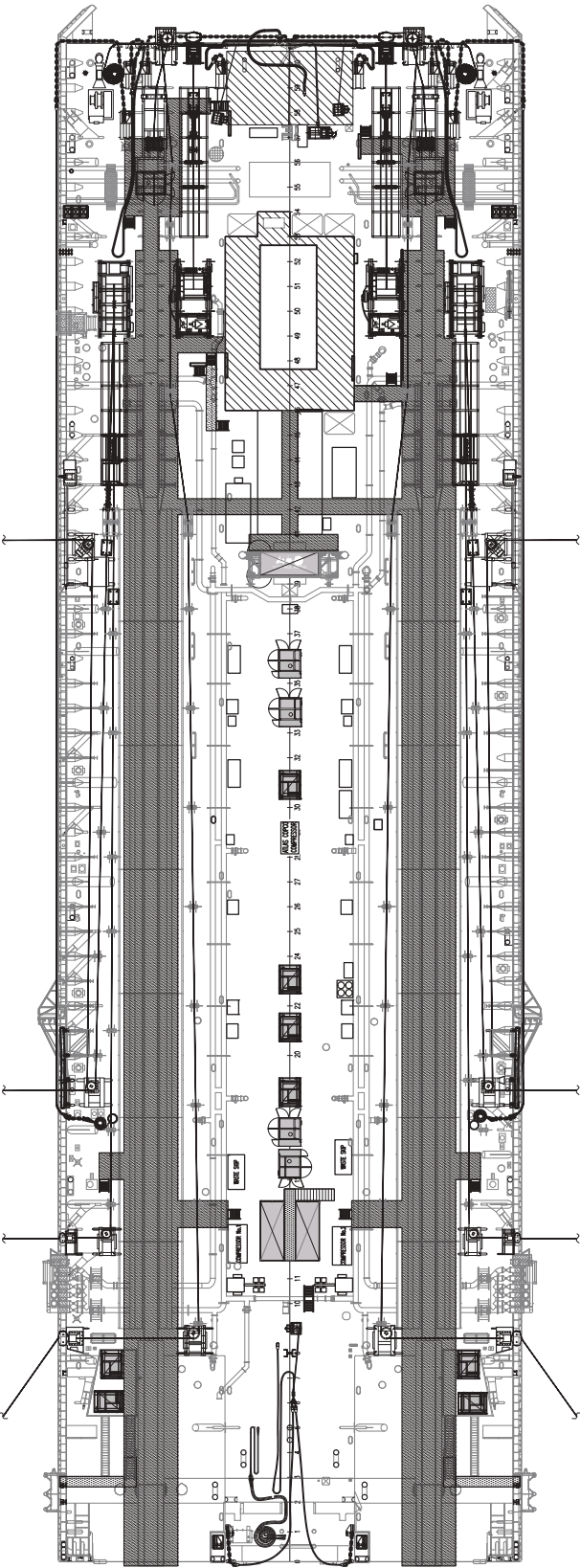
| Machinery and Propulsion   |  |
|----------------------------|--|
| Main diesel generators     | 3 x "DEUTZ" model, VA 16M 816 type diesel with a capacity of 3 x 820 kW at 1500 rpm. |
| Generators                 | Produced by "Siemens" company, 970 kW, 380 V, 50 Hz.                                 |
| Emergency diesel generator | "DEUTZ" model, VA 16M816 type diesel with a capacity of 415kW, 1500 rpm.             |

| Mooring Equipment  |   |
|--|---|
| Anchors  | 2 x anchors: 1 x 10940kg and 1 x 11120 kg |
| <b>Towing equipment:</b> Tow bridle on stern and aft side of the barge – Alloy safety pin bow shackle with SWL of 120t; Triangle plate with MBL of 750t, Chamfered base Smith Brackets with SWL of 204t; Pennant wire of 77mm in diameter and 20 meters long, MBL – 332 tons; Pennant wire of 76 mm in diameter and 10 meters long with MBL of 327 tons; Sling leg wire rope – 64 mm in diameter and 25 meters long with SWL of 54,8 tons; Mooring chain sling – 76 mm in diameter, 142 links, MBL – 474 tons. |   |
| <b>Emergency towing equipment:</b> Mooring chain sling – 76 mm in diameter, 52 links with MBL of 474 tons; Single leg wire rope – 76 mm in diameter and 150 meters long, with MBL of 370 tons.   |   |
| Anchor wires   | 64 mm in diameter, L=3000m                |
| Capstan  | 2 x 241 KN                                |

| Special Equipment  |  |
|--|--|
| <b>General information:</b> There are two launch ways each 127m long with the slope of 7 degrees to the stern direction. There are 30 meters long and 3 meters wide two balance levers in the stern, one for each lunch ways and with maximum load on each of constitutes 8,5 thousand tons. The levers may rotate 90 degrees. Fixation of support blocks on the deck is carried out through the use of special fixing hardware. |  |

| Safety Equipment                      |               |
|---------------------------------------|---------------|
| Life rafts                            | 2 x 20 person |
| Life jacket                           | 12 pcs        |
| Immersion suit                        | 14 pcs        |
| Communication Equipment               |               |
| Inmarsat: 1 x Sailor; VHF: 1 x Sailor |               |





**STB-1**

VESSEL SPECIFICATIONS  
Transportation and Launch Barge with Cargo Carrying Capacity of 18000 MT



**Address:** Mikayil Useynov street 2, AZ 1003, Baku, Azerbaijan Republic

**Phone:** (+99412) 404 37 00 | **Fax:** (+99412) 404 38 00

**Email:** [projects@asco.az](mailto:projects@asco.az) | **Web:** [www.asco.az](http://www.asco.az)

**Direct Contacts:**

**Phone:** (+99412) 404 37 15; (+99412) 404 37 40