



AZERBAIJAN  
CASPIAN SHIPPING  
COMPANY



# Derrick Barge Azerbaijan (DBA)

V E S S E L   S P E C I F I C A T I O N S



SWL 2500T Crane vessel / Max POB 195 Person



## Dimensions

Length overall, m	127
Length between perpendiculars, m	121
Breadth overall, m	34,5
Hull height up to the main deck, m	7,5
Hull height up to the upper deck, m	11,0
Overall height, m	64
Draft fully laden, m	6,18
Light draft counter balanced (free of provisions, free of ballast) (bow / stern)	1,38 / 6,18
Displacement of vessel fully loaded with cargo, t	21392
Displacement of the vessel unloaded, t	12179
Deadweight, t	9213
Net tonnage, t	4001
Gross tonnage, t	11264

## Capacities

Crew, person	27
Installation staff, person	168
Speed at 4,5m draught, knots	-----
Cargo deck, surface area, m2	952
Specific load on the deck, t/m2	10
Helicopter deck, diameter in meters	23
Fuel reserves, m3	695
Lubricating oil, m3	29,9
Fresh water, m3	1200
Bilge water, m3	107,5
Fuel consumption, kg/h	300
Oil consumption, kg/h	3,5
Endurance, days	30

## General Data

IMO number	7604374
Port of registry / Call sign	Baku / 4JCJ
Purpose Of The Ship	Derrick Crane Barge
Type of the Ship	Seagoing derrick barge with a crane on the aft of the hull, free deck space, helicopter deck and with a central control panel on the bow of the ship.
Flag	Azerbaijan
Year built / builder	1980 / "Bloom and Voss", Hamburg, Germany
Class	KM1 1A2

## Machinery and Propulsion

**Main engines:** 12ASV 25/30 model 3 x diesel engines manufactured by "Zulzer" with a capacity of 3 x 2147 kW (3 x 2920) at 1000 rpm.

**Main propellers :** 2 x 2,8m diameter controllable propeller screws on the fixed nozzle, left rotating, 4 bladed, made of nickel - aluminum multicomponent bronze.

**Bow thruster:** With a capacity of 441,2 kW (600 BHP), generating 7400 KGF draft at zero speed, with D=1600 mm, 380 rpm.

**Generator sets:** 3 x diesel powered main generator sets. Generators with a voltage of 6000 V, 50 Hz at 1000 rpm, with a capacity of 3 x 2700 kW, manufactured by AEG.

**Emergency generators:** One diesel generator equipped with either TBD616 V12G3 type diesel engine with a capacity of 738 kW at 1500 rpm and generator with a voltage of 380 V, frequency of 50 Hz and capacity of 618 kW (495 kW).

## Anchor Handling & Mooring Gear

**Anchors:** 8 pieces of LWT type anchors manufactured by "Bloom and Voss", each weighing 4 pieces 14000 - 4 pieces 18000 kg

**Anchor wire** 3000m long, 71 mm diameter for 200 m depth, ultimate breaking load 225000 kg.

**Anchorage winch cylinders:** 3190 mm diameter, 2793 mm long, 120 t draw bar pull anchor winch, speed 78 meters per minute.

**Mooring gear:** 19 pieces of D=64mm, 120m long mooring wires. Ultimate breaking load - 34800 kg.

**Mooring capstan:** With capacity of 18,5 kW, 8 tons of pull force at 12 meters per minute speed of the wire.

**Additional equipment (N/A):** Pile-driving equipment; Cargo-fastening equipment - 30 pieces of special blocks, with a metal frame and with dimensions of 6000 x 1000 mm, wooden part thickness 200 mm.

## Deck Crane

**General information:** Heavy duty electrical swivel crane located on the aft of the ship, manufactured by "Pohlig Heckel Bleichert" Cologne, with a carrying capacity of 2000/2500 tons. Swivel bearing device - multirole roller bearing manufactured by "Rote Erde", Federative Republic of Germany. Derricking mechanism made of polyplast.

### Crane performance

#### Main hoist performance

Crane capacity, m	handling radius	crane position
2000 t	31,5	while rotating
2455 t	28	dead on the aft
2500 t	27,5	dead on the aft

#### Hook height on the deck

Pos.	1	2	3	Lifting type	Crane handling radius	1	2	3	4
	66m	61m	24m	main hoist	23m	32m	58,5m	60m	
	80,5m	74,5m	30,5m	hoist 400t	26,3m	37,3m	70m	72m	
	85,5m	79,0m	31,5m	hoist 30t	29,6m	41m	74m	77m	

## Safety Equipment

Life rafts	16 x 25 person
Lifejackets	405
Immersion Suits	200
Rescue boat	1 x 6 person

## Accommodation

Cabins	64
Crew, person	27
Client personnel, person	168
Hospital	1

## Navigation & Communication Equipment

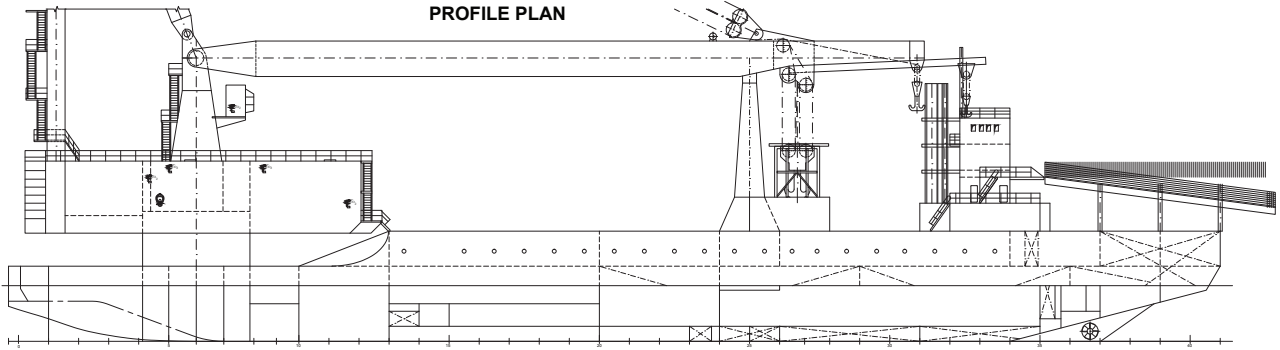
Radar - 1 x Furuno MU-190; Echo sounder - 1 x Furuno; Gyro compass - 1 x Standart 22; GPS - 1 x Furuno; MF/HF transceiver - 1 x Furuno; GMDSS - 1 x Inmarsat C; VHF - 2 x Furuno



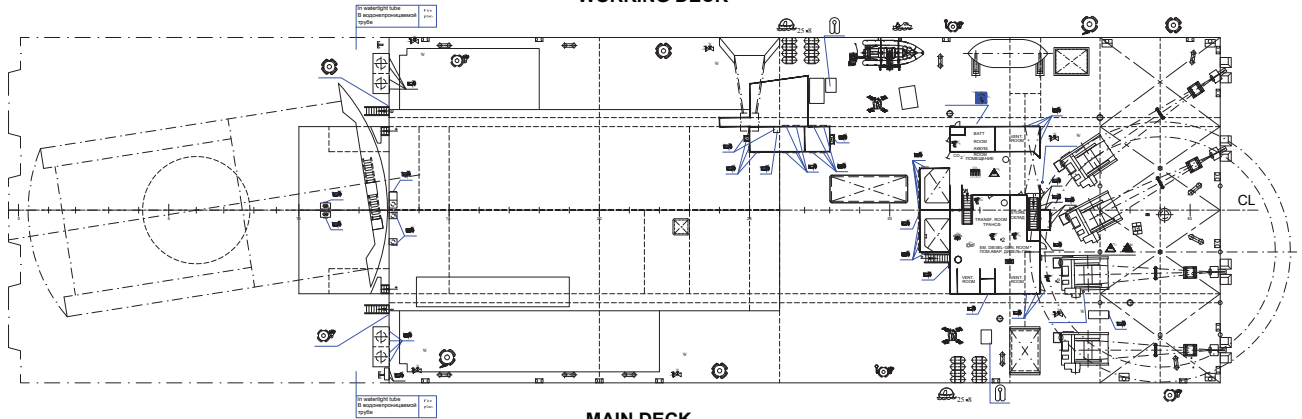
## Derrick Barge Azerbaijan (DBA)

VESSEL SPECIFICATIONS  
SWL 2500T Crane vessel / Max POB 195 Person

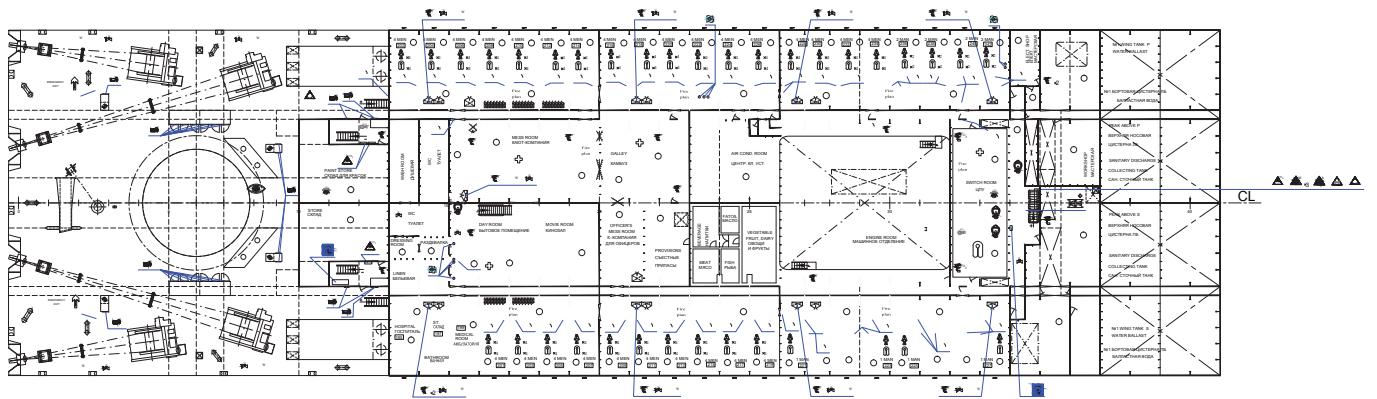
PROFILE PLAN



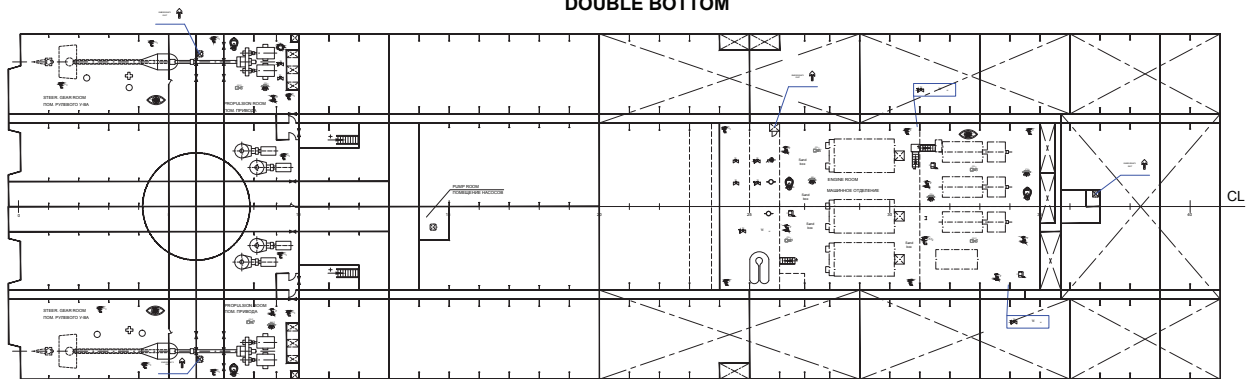
WORKING DECK



MAIN DECK



DOUBLE BOTTOM



## Derrick Barge Azerbaijan (DBA)

VESSEL SPECIFICATIONS  
SWL 2500T Crane vessel / Max POB 195 Person



**Address:** 2, Neftchilar Avenue, AZ 1003, Baku, Azerbaijan Republic

**Phone:** (+99412) 404 37 00 | **Fax:** (+99412) 404 38 00

**Email:** [projects@asco.az](mailto:projects@asco.az) | **Web:** [www.asco.az](http://www.asco.az)

**Direct Contacts:**

**Phone:** (+99412) 404 37 15; (+99412) 404 37 40